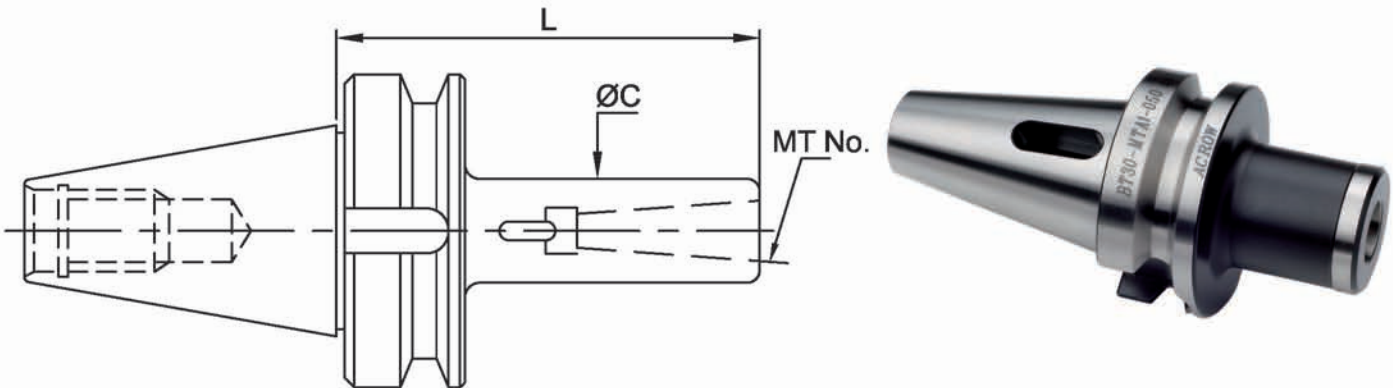




MTA

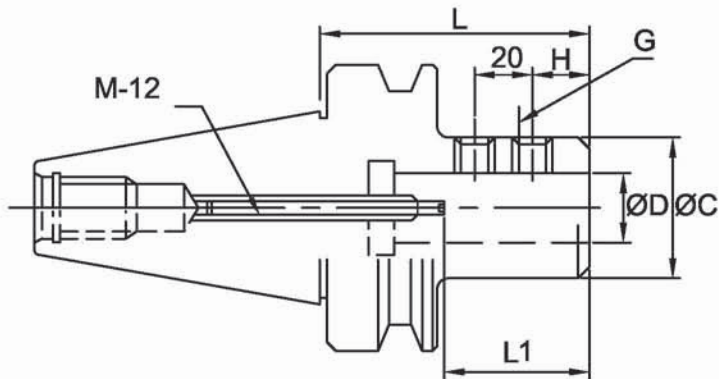


ORDER BY NO	MT.NO.	L	ØC
BT30-MTA1-50	1	50	25
BT30-MTA1-120		120	
BT30-MTA2-62	2	62	32
BT30-MTA2-120		120	
BT30-MTA3-80	3	80	40
BT30-MTA3-135		135	
BT35-MTA1-45	1	45	25
BT35-MTA1-105		105	
BT35-MTA2-60	2	60	32
BT35-MTA2-120		120	
BT35-MTA3-75	3	75	40
BT40-MTA1-45	1	45	25
BT40-MTA1-120		120	
BT40-MTA2-60	2	60	32
BT40-MTA2-120		120	
BT40-MTA3-75	3	75	40
BT40-MTA3-135		135	
BT40-MTA4-95	4	95	50
BT40-MTA4-165		165	
BT45-MTA1-45	1	45	25
BT45-MTA1-120		120	
BT45-MTA2-45	2	45	32
BT45-MTA2-135		135	
BT45-MTA3-75	3	75	40
BT45-MTA3-150		150	
BT45-MTA4-90	4	90	50
BT45-MTA4-180		180	
BT45-MTA5-120	5	120	70
BT50-MTA1-45	1	45	25
BT50-MTA1-120		120	
BT50-MTA1-180		180	
BT50-MTA2-45	2	45	32
BT50-MTA2-135		135	
BT50-MTA2-180		180	
BT50-MTA3-45	3	45	40
BT50-MTA3-150		150	
BT50-MTA3-180		180	
BT50-MTA4-75	4	75	50
BT50-MTA4-180		180	
BT50-MTA5-180	5	180	70

SIDE LOCK HOLDER BT SHANK (METRIC)

SL/SLA

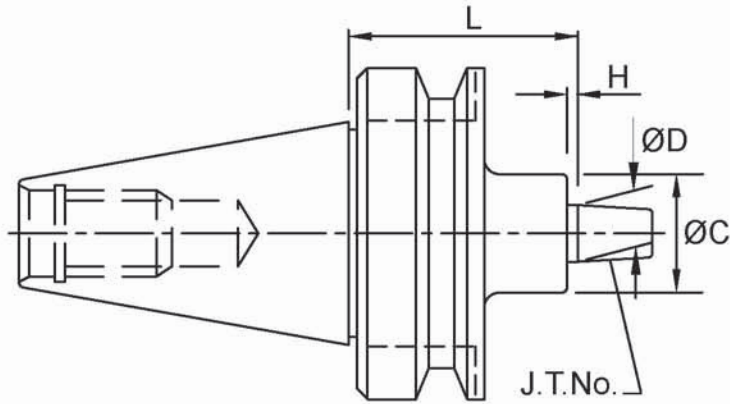
SL/SLA



ORDER BY NO	D	L	C	H	L1	G
					Min~Max	
BT30-SL6-60	6	60	20	15	-	M 6
BT30-SL8-60	8		24			
BT30-SL10-60	10		30			16
BT30-SL12-60	12		35			20
BT30-SL16-60	16		40			23
BT30-SLA 20-75	20	75	50	25	55~70	M 10
BT30-SLA 25-90	25	90	50			
BT35-SL6-60	6	60	20	15	-	M 6
BT35-SL8-60	8		24			
BT35-SL10-60	10		30			20
BT35-SL12-60	12		35			20
BT35-SL16-60	16		40			22.5
BT35-SLA20-75	20	75	50	25	55~70	M 10
BT35-SLA32-90	25	90	50			
BT40-SL6-65	6	65	20	15	-	M 6
BT40-SL8-65	8		24			
BT40-SL10-65	10		30			16
BT40-SL12-65	12		35			20
BT40-SL16-65	16		40			23
BT40-SLA20-90	20	90	50	25	55~70	M 10
BT40-SLA25-90	25					
BT40-SLA32-90	32		60	30		
BT45-SL6-75	6	75	20	15	-	M 6
BT45-SL8-75	8		24			
BT45-SL10-75	10		30			16
BT45-SL12-75	12		35			20
BT45-SL16-85	16		85			40
BT45-SLA20-90	20	90	50	25	55~70	M 10
BT45-SLA25-90	25					
BT45-SLA32-90	32		60	30	65~80	
BT50-SL6-75	6	75	20	15	-	M 6
BT50-SL8-75	8		24			
BT50-SL10-75	10		30			16
BT50-SL12-75	12		35			20
BT50-SL16-75	16		40			23
BT50-SLA20-105	20	105	50	25	55~70	M 10
BT50-SLA25-105	25					
BT50-SLA32-105	32		60	30	65~80	

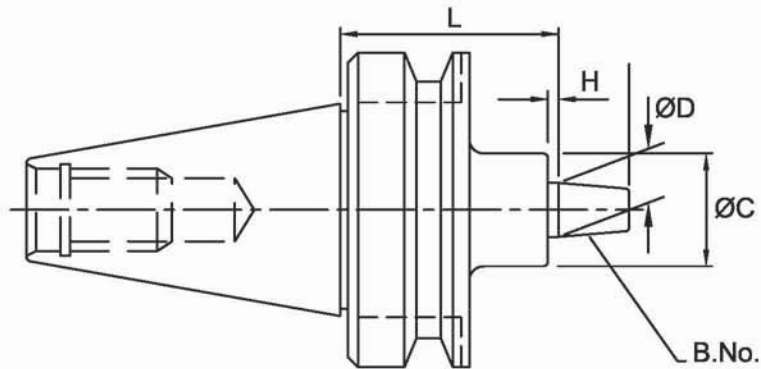


DRILL CHUCK ADAPTORS BT SHANK (Jacobs)



ORDER BY NO.	JT NO.	ØD	L	H	ØC	
BT30-JTA1-45	1	9.754	45	3	30	
BT30-JTA1-90	1	9.754	90			
BT30-JTA2-45	2	14.199	45	4		
BT30-JTA2-90	2	14.199	90			
BT35-JTA1-30	1	9.754	30	3	30	
BT35-JTA2S-30	2SHORT	13.94		4		
BT35-JTA2-30	2	14.199			5	
BT40-JTA33-30	33	15.85		35		
BT35-JTA6-30	6	17.17			3	
BT35-JTA3-30	3	20.599		4		
BT40-JTA1-45	1	9.754	45		3	30
BT40-JTA1-90			90			
BT40-JTA2S-45	2SHORT	13.94	45	4		
BT40-JTA2S-90	2SHORT	13.94	90			
BT40-JTA2-45	2	14.199	45	5		
BT40-JTA2-90	2	14.199	90		35	
BT40-JTA33-45	33	15.85	45	3		
BT40-JTA33-90	33	15.85	90		4	
BT40-JTA6-45	6	17.17	45	5		
BT40-JTA6-90	6	17.17	90		30	
BT40-JTA3-45	3	20.599	45	3		
BT40-JTA3-90	3	20.599	90		4	
BT45-JTA1-45	1	9.754	45	5		35
BT45-JTA1-90	1	9.754	90			
BT45-JTA2S-45	2SHORT	13.94	45	3		
BT45-JTA2S-90	2SHORT	13.94	90			
BT45-JTA2-45	2	14.199	45	4		
BT45-JTA2-90	2	14.199	90		30	
BT45-JTA33-45	33	15.85	45	5		
BT45-JTA33-90	33	15.85	90		3	
BT45-JTA6-45	6	17.17	45	4		
BT45-JTA6-90	6	17.17	90		5	
BT45-JTA3-45	3	20.599	45	30		
BT45-JTA3-90	3	20.599	90		4	
BT50-JTA1-45	1	9.754	45	5		35
BT50-JTA1-105	1	9.754	105			
BT50-JTA2S-45	2SHORT	13.94	45	3		
BT50-JTA2S-105	2SHORT	13.94	105			
BT50-JTA2-45	2	14.199	45	4		
BT50-JTA2-105	2	14.199	105		30	
BT50-JTA33-45	33	15.85	45	5		
BT50-JTA33-105	33	15.85	105		3	
BT50-JTA6-45	6	17.17	45	4		
BT50-JTA6-105	6	17.17	105		5	
BT50-JTA3-45	3	20.599	45	30		
BT50-JTA3-105	3	20.599	105		4	

ADAPTORS FOR DRILL CHUCK BT SHANK (Din)

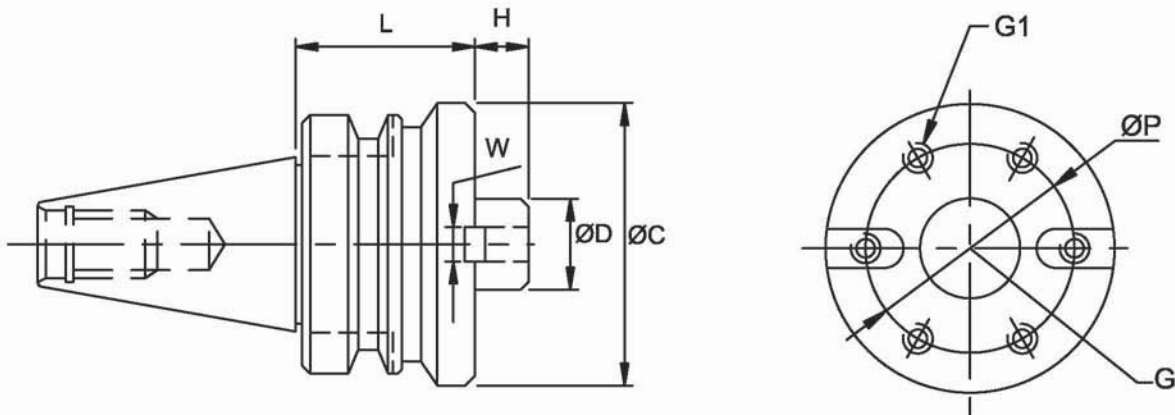


JTB

ORDER BY NO.	B. NO.	ØD	L	H	ØC
BT30-B12-45	B12	12.065	45	3	30
BT30-B12-90			90		
BT30-B16-45	B16	15.733	45	4	
BT30-B16-90			90		
BT35-B6-45	B6	6.35	45	3	
BT35-B6-90			90		
BT35-B10-45	B10	10.095	45	3	
BT35-B10-90			90		
BT35-B12-45	B12	12.065	45	4	
BT35-B12-90			90		
BT40-B6-45	B6	6.35	45	3	
BT40-B6-90			90		
BT40-B10-45	B10	10.095	45	3	
BT40-B10-90			90		
BT40-B12-45	B12	12.065	45	4	
BT40-B12-90			90		
BT40-B16-45	B16	15.733	45	5	
BT40-B16-90			90		
BT40-B18-45	B18	17.431	45	5	
BT40-B18-90			90		
BT45-B6-45	B6	6.35	45	3	
BT45-B6-90			90		
BT45-B10-45	B10	10.095	45	3	
BT45-B10-90			90		
BT45-B12-45	B12	12.065	45	4	
BT45-B12-90			90		
BT45-B16-45	B16	15.733	45	5	
BT45-B16-90			90		
BT45-B18-45	B18	17.431	45	5	
BT45-B18-90			90		
BT50-B6-45	B6	6.35	45	3	
BT50-B6-90			90		
BT50-B10-45	B10	10.095	45	3	
BT50-B10-105			105		
BT50-B12-45	B12	12.065	45	4	
BT50-B12-105			105		
BT50-B16-45	B16	15.733	45	5	
BT50-B16-105			105		
BT50-B18-45	B18	17.431	45	5	
BT50-B18-105			105		

Each drill chuck adaptor is supplied without drill chuck.

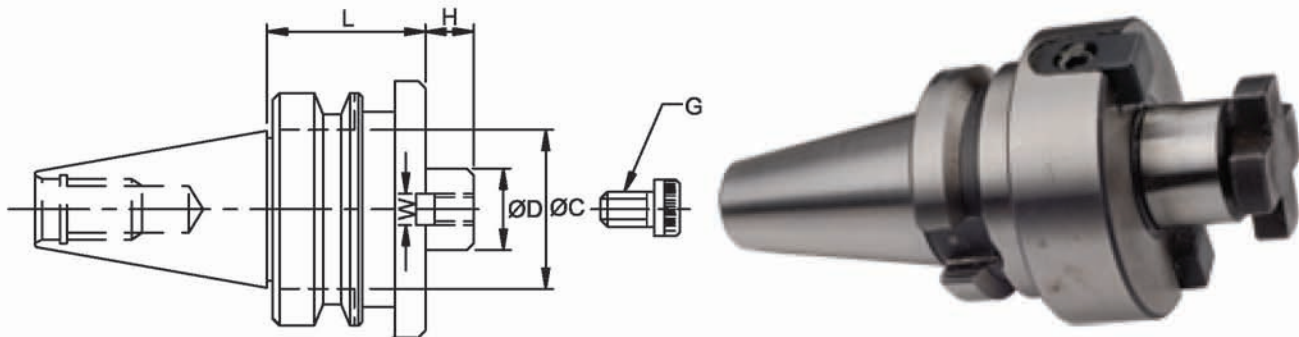
FMB



Dimension									
ORDER BY NO(D-L)	D	L	H	C	W	G1	P	G	Cuttter Dia D1
BT30-FMB 22-45	22	45	18	56	10	-	-	M10	63
BT30-FMB 27-45	27	45	26	80	12	-	-	M12	
BT35-FMB 27-45	27	45	26	80	12	-	-	M12	80
BT35-FMB 40-45	40	45		85	16	-	-	M16	125
BT40-FMB 27-60	27	60	26	80	12	-	-	M12	80
BT40-FMB 27-90	27	90		85	16	-	-	M16	125
BT40-FMB 40-60	40	60		80	12	-	-	M12	80
BT45-FMB 27-60	27	60	26	80	12	-	-	M12	80
BT45-FMB 27-120	27	120		85	16	-	-	M16	125
BT45-FMB 40-60	40	60		80	12	-	-	M12	80
BT45-FMB 40-105	40	105	26	110	16	-	-	M16	125
BT45-FMB 40F-65	40	65	26	110	16	M12	66.7	-	125
BT50-FMB 27-45	27	45	26	80	12	-	-	M12	80
BT50-FMB 27-90	27	90		85	16	-	-	M16	125
BT50-FMB 27-150	27	150		80	12	-	-	M12	80
BT50-FMB 40-45	40	45		85	16	-	-	M16	125
BT50-FMB 40-75	40	75		80	12	-	-	M12	80
BT50-FMB 40-105	40	105		85	16	-	-	M16	125
BT50-FMB 40F-75	40	75		110	16	M12	66.7	-	125
BT50-FMB 60F-75	60	75	25	140	25.4	M16	101.6	-	200

Each holder is supplied with two driving dogs, a clamp bolt.

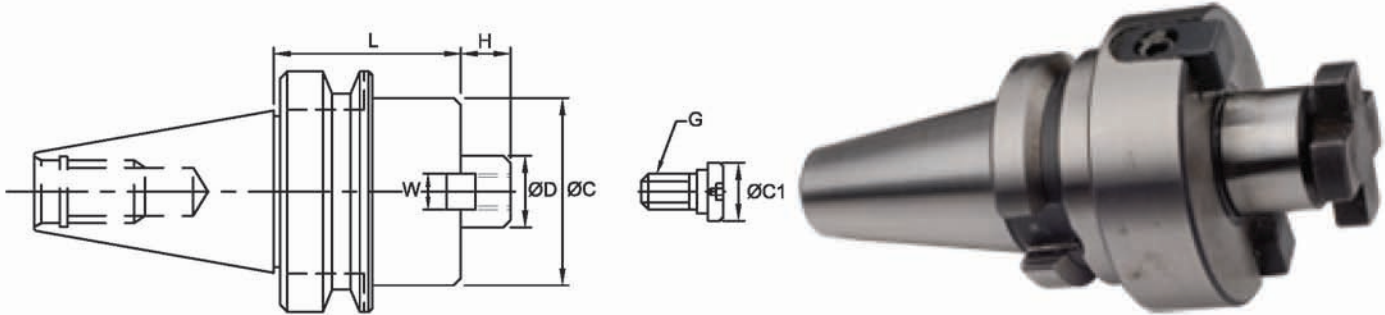
FMC



Dimension ORDER BY NO.(DF-L)	Dimension of Arbor With cutter			
	H	C	W	G
BT30-FMC 22-30	18	45	10	M10
BT30-FMC 27-35	20	70	12	M12
BT35-FMC 22-30	18	45	10	M10
BT35-FMC 27-35	20	70	12	M12
BT35-FMC 32-40	22	85	14	M16
BT40-FMC 22-45	18	45	10	M10
BT40-FMC 22-90				
BT40-FMC 27-60	20	70	12	M12
BT40-FMC 27-90				
BT40-FMC 32-60	22	85	14	M16
BT40-FMC 32-75				
BT45-FMC 22-45	18	45	10	M10
BT45-FMC 22-120				
BT45-FMC 27-60	20	70	12	M12
BT45-FMC 27-120				
BT45-FMC 32-60	22	85	14	M16
BT45-FMC 32-105				
BT50-FMC 22-60	18	40	10	M10
BT50-FMC 22-105				
BT50-FMC 22-150				
BT50-FMC 27-45	20	70	12	M12
BT50-FMC 27-90				
BT50-FMC 27-150				
BT50-FMC 32-45	22	85	14	M16
BT50-FMC 32-75				
BT50-FMC 32-105				

Each holder is supplied with two driving dogs, a clamp bolt.

SMS

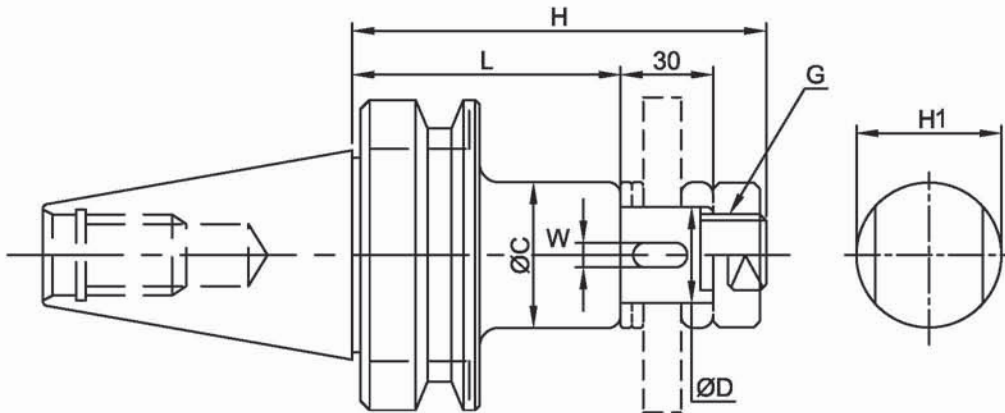


Order By No.	ØD	L	H	ØC	ØC1	W	G
BT30-SMS16-30	16	30	14	34	20	8	M8
BT30-SMS22-30	22		16	42	28		M10
BT30-SMS27-30	27		18	50	33	10	M12
BT35-SMS16-30	16	30	14	34	20	8	M8
BT35-SMS22-30	22		16	42	28		M10
BT35-SMS27-30	27		18	50	33	10	M12
BT35-SMS32-35	32	35	20	60	40		M16
BT40-SMS16-60	16	60	14	34	20	8	M8
BT40-SMS16-120		120					
BT40-SMS22-60	22	60	16	42	28	10	M10
BT40-SMS22-120		120					
BT40-SMS27-45	27	45	18	50	33	12	M12
BT40-SMS27-105		105					
BT40-SMS32-45	32	45	20	60	40	14	M16
BT40-SMS32-75		75					
BT45-SMS16-60	16	60	14	34	20	8	M8
BT45-SMS16-120		120					
BT45-SMS22-60	22	60	16	42	28	10	M10
BT45-SMS22-120		120					
BT45-SMS27-60	27	60	18	50	33	12	M12
BT45-SMS27-105		105					
BT45-SMS32-45	32	45	20	60	40	14	M16
BT45-SMS32-75		75					
BT50-SMS16-75	16	75	14	34	20	8	M8
BT50-SMS16-120		120					
BT50-SMS22-75	22	75	16	42	28	10	M10
BT50-SMS22-120		120					
BT50-SMS27-60	27	60	18	50	33	12	M12
BT50-SMS27-105		105					
BT50-SMS32-45	32	45	20	60	40	14	M16
BT50-SMS32-75		75					
BT50-SMS40-45	40	45	23	70	50	16	M20
BT50-SMS40-75		75					
BT50-SMS50-60	50	60	26	90	65	18	M24

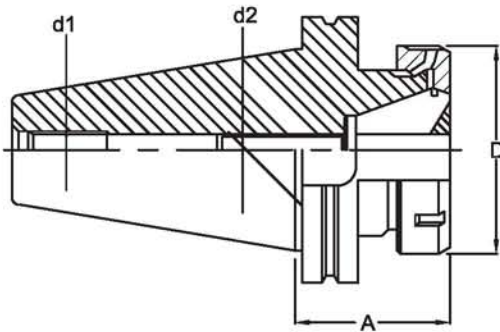
Each holder is supplied with two driving dogs, a clamp bolt.

SIDE & FACE MILL CUTTER ARBOR BT SHANK

SAC



Order By No.	D	L	H	H1	C	W	G
BT30-SCA13-75	13	75	120	17	20	-	M12
BT30-SCA16-75	16		121	23	26	4	M14
BT30-SCA22-75	22		126	29	34	6	M20
BT35-SCA13-75	13	75	120	17	20	-	M12
BT35-SCA16-75	16		121	23	26	4	M14
BT35-SCA22-75	22		126	29	34	6	M20
BT35-SCA27-75	27		130	32	40	7	M24
BT40-SCA13-75	13	75	120	17	20	-	M12
BT40-SCA13-105		105	150				
BT40-SCA16-75	16	75	121	23	26	4	M14
BT40-SCA16-105		105	151				
BT40-SCA22-75	22	75	126	29	34	6	M20
BT40-SCA22-120		120	171				
BT40-SCA27-75	27	75	130	32	40	7	M24
BT40-SCA27-120		120	175				
BT40-SCA32-90	32	90	150	41	46	8	M30
BT45-SCA13-75	13	75	120	17	20	-	M12
BT45-SCA13-105		105	150				
BT45-SCA16-90	16	90	136	23	26	4	M14
BT45-SCA16-120		120	166				
BT45-SCA22-90	22	90	141	29	34	6	M20
BT45-SCA22-135		135	186				
BT45-SCA27-90	27	90	145	32	40	7	M24
BT45-SCA27-135		135	190				
BT45-SCA32-90	32	90	150	41	46	8	M30
BT45-SCA32-135		135	190				
BT50-SCA13-75	13	70	120	17	20	-	M12
BT50-SCA13-105		105	150				
BT50-SCA16-90	16	90	136	23	26	4	M14
BT50-SCA16-120		120	166				
BT50-SCA22-90	22	90	144	29	34	6	M20
BT50-SCA22-135		135	186				
BT50-SCA27-90	27	90	145	32	40	7	M24
BT50-SCA27-135		135	190				
BT50-SCA32-90	32	90	150	41	46	8	M30
BT50-SCA32-135		135	135				
BT50-SCA40-90	40	90	156	46	55	10	M36



COLLECT CHUCK DESIGNTION	SUITABLE FOR COLLET	COLLET CLAMPING CAPACITY	A	d1	d2	NUT		WRENCH DESIGNATION
						D	DESIGNATION	
BT30/ER16/A70	ER16	0.5-10	70	M12	M8X1	28	ER16	MTS25
BT30/ER16M/A70	ER16	0.5-10	70	M12	M8X1	22	ER16M	RS16M
BT30/ER16M/A120	ER16	0.5-10	120	M12	M8X1	22	ER16M	RS16M
BT30/ER20/A70	ER20	1.0-13	70	M12	M8X1	34	ER20	MTS30
BT30/ER32/A70	ER32	2.0-20	70	M12	M8X1	50	ER32	CS32
BT40/ER16/A70	ER16	0.5-10	70	M16	M8X1	28	ER16	MTS25
BT4/ER16/A105	ER16	0.5-10	105	M16	M8X1	28	ER16	MTS25
BT40/ER 16M/A125	ER16	0.5-10	125	M16	M8X1	22	ER16M	RS16M
BT40/ER20/A70	ER20	1.0-13	70	M16	M12X1	34	ER20	MTS30
BT40/ER20/A105	ER20	1.0-13	105	M16	M12X1	34	ER20	MTS30
BT40/ER20M/A135	ER20	1.0-13	135	M16	M12X1	28	ER20M	RS20M
BT40/ER25/A70	ER25	1.0-16	70	M16	M18X1.5	42	ER25	RS25M
BT40/ER25/A105	ER25	1.0-16	105	M16	M18X1.5	42	ER25	CS25
BT40/ER25M/A150	ER25	1.0-16	150	M16	M18X1.5	35	ER25M	CS25
BT40/ER32/A70	ER32	2.0-20	70	M16	M22X1.5	50	ER32	CS32
BT40/ER32/A100	ER32	2.0-20	100	M16	M22X1.5	50	ER32	CS32
BT40/ER40/A80	ER40	3.0-26	80	M16	M22X1.5	63	ER40	CS40
BT40/ER40/A100	ER40	3.0-26	100	M16	M22X1.5	63	ER40	CS40
BT40/ERO25/A70	ERO25	1.5-16	70	M16	M18X1.5	43	ERO25	CS25
BT40/ERO35/A80	ERO35	1.5-25	80	M16	M18X1.5	60	ERO35	CS40
BT40/ERO44/A100	ERO44	3.5-32	100	M16	M18X1.5	72	ERO44	CS50
BT40/ERG100/A80	ERG100	6.0-25	80	M16	M18X1.5	60	ERG100	CS40
BT50/ER 16M/A135	ER16	0.5-10	135	M24	M8X1	22	ER16M	RS16M
BT50/ER20M/A135	ER20	1.0-13	135	M24	M12X1	28	ER20M	RS20M
BT50/ER25M/A135	ER25	1.0-16	135	M24	M18X1.5	35	ER25M	RS25M
BT50/ER32/A100	ER32	2.0-20	100	M24	M22X1.5	50	ER32	CS32
BT50/ER40/A80	ER40	3.0-26	80	M24	M22X1.5	63	ER40	CS40
BT50/ER50/A100	ER50	10-.34	100	M24	M22X1.5	78	ER50	CS50
BT50/ERO35/A90	ERO35	1.5-25	90	M24	M18X1.5	43	ERO35	CS40
BT50/ERO44/A100	ERO44	3.5-32	100	M24	M18X1.5	72	ERO44	CS50