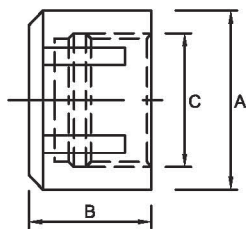


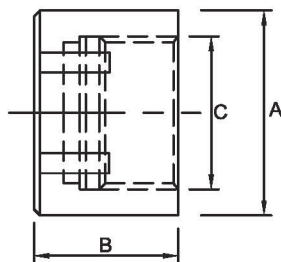
HEXAGONAL NUT FOR ER COLLET CHUCK

UM/ER	A	B	C	Spanner to be used
UM/ER11	19	11.5	M14X075	MTS 17
UM/ER16	28	17	M22X1.50	MTS 25
UM/ER20	34	19	M25X1.50	MTS 30



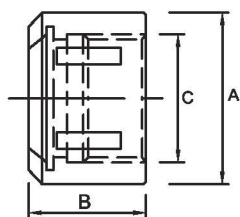
SLOTTED NUT ER COLLET CHUCK

UM/ER	A	B	C	Spanner to be used
UM/ER 25	42	20	M32X1.50	CS-25
UM/ER 32	50	22	M40X1.50	CS-32
UM/ER 40	63	25	M50X1.50	CS-40
UM/ER 50	78	35	M64X2.00	CS-50



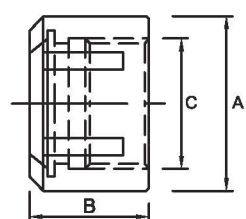
MINI NUT FOR ER COLLET CHUCK

UM/ER	A	B	C	Spanner to be used
UM/ER 8M	12	11	M10X0.75	RS-8M
UM/ER 11M	16	11.5	M13X0.75	RS-11M
UM/ER 16M	22	17	M19X1.00	RS-16M
UM/ER 20M	28	19	M24X1.00	RS-20M
UM/ER 25M	35	20	M30X1.00	RS-25M



SLOTTED NUT FOR ERO COLLET CHUCK

UM/ERO	A	B	C	Spanner to be used
UM/ERO 25	43	24	M33X1.5	CS-25
UM/ERO 35	60	30	M48X2	CS-40
UM/ERO 44	72	34	M60X2.5	CS-50



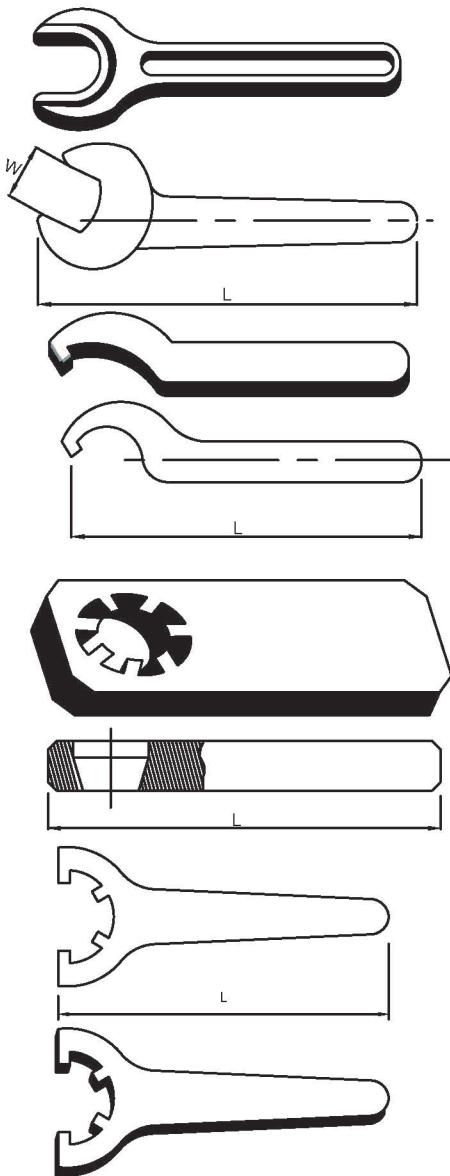
SLOTTED NUT FOR ERG COLLET CHUCK

UM/ERG	A	B	C	Spanner to be used
UM/ERG 75	51	23	1 1/2" -12TPI(ACME)	CS-32
UM/ERG 100	63	30	1 7/8" -12TPI(ACME)	CS-40
UM/ERG 150	89	40	2 41/64" -12TPI (ACME)	CS-150



For Hexagonal Nuts

Spanner Designaton	W	L	Suitable For Nuts
MTS 17	17	150	ER 11
MTS 25	25	200	ER 16
MTS 30	30	250	ER 20



Type C for Slotted Nuts

Spanner Designaton	L	Suitable For Nuts
CS 25	160	ER 25
CS 32	165	ER 32
CS 40	228	ER 40
CS 50	280	ER 50

Type EM for Mini Nuts

Spanner Designaton	L	Suitable For Nuts
RS 8M	75	R 8M
RS 11M	100	ER 11M
RS 16M	140	ER 16M
RS 20M	140	ER 20M
RS 25M	148	ER 25M

'U' Type Wrench for Slotted Nuts

Spanner Designaton	L	Suitable For Nuts
US 25	150	ER 25
US 32	140	ER 32
US 40	180	ER 40