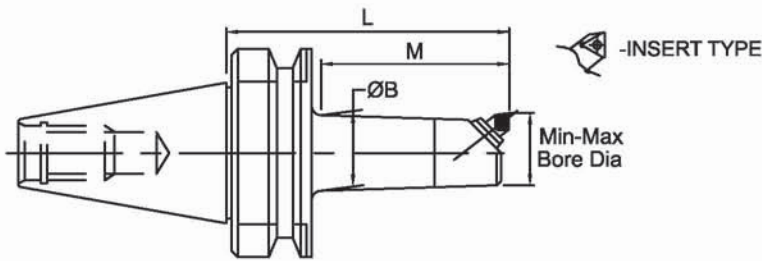




BCA



PART NO.	BOOKING RANGE		L	ØB	M	MICROBORE UNIT		
	Min	Max				BRAZED	INDEXABLE	ISO INSERTS
BT30-BCA 13.5-110	13.5	16	110	13.0	67	M1B2F40	-	-
BT30-BCA 14.5-110	14.5	17	110	14.0				
BT30-BCA 16-115	16	22.5	115	15.0	73	M1A2F40	-	-
BT30-BCA 19-125	19	23	125	18.0	86	M2B2F40	M2B2CO4	CPGT04/CCGT04
BT30-BCA 23-135	23	29	135	22.0	105	M3B2F40	M3B2T	TCMT 06T104
BT30-BCA 29-145	29	41	145	28.0	115	M3A2F40	M3A2T	
BT35-BCA 13.5-110	13.5	16	110	13	67	M1B2F40	-	-
BT35-BCA 14.5-110	14.5	17	110	14				
BT35-BCA 16-115	16	22.5	115	15	73	M1A2F40	-	-
BT35-BCA 19-125	19	23	125	18	86	M2B2F40	M2B2CO4	CPGT04/CCGT04
BT35-BCA 23-135	23	29	135	22	105	M3B2F40	M3B2T	TCMT 06T104
BT35-BCA 29-145	29	41	145	28	115	M3A2F40	M3A2T	
BT40-BCA 13.5-105	13	16	105	13	67	M1B2F40	-	-
BT40-BCA 13.5-165			165					
BT40-BCA 14.5-105	14.5	17	105	14				
BT40-BCA 14.5-165			165					
BT40-BCA 16-105	16	22.5	105	15	73	M1A2F40	-	-
BT40-BCA 16-180			180					
BT40-BCA 19-120	19	23	120	18	86	M2B2F40	M2B2CO4	CPGT04/CCGT04
BT40-BCA 19-180			180					
BT40-BCA 23-135	23	29	135	22	105	M3B2F40	M3B2T	TCMT 06T104
BT40-BCA 23-195			195					
BT40-BCA 29-150	29	41	150	28	115	M3A2F40	M3A2T	
BT40-BCA 29-195			195					
BT40-BCA 38-150	38	49	150	35	115	M5B2F40	M5B2T	TCMT 110204
BT40-BCA 38-210			210	37	172			
BT40-BCA 46-150	46	66	150	41	115	M5A2F40	M5A2T	
BT40-BCA 46-225			225	44	182			
BT40-BCA 62-165	62	87	165	-	135	M7A2F80	M7A2T	TCMT 110204
BT40-BCA 62-225			225	57	184			
BT40-BCA 83-120	83	108	120	-	-			
BT40-BCA 83-165			165	-	-			
BT40-BCA 83-225			225	-	-			
BT40-BCA 98-165	98	142	165	-	-	M10A2F80	M10A2T	TCMT 16T304

Note: We can suit ISO insert any make like SANDVIK, SECO, WIDIA, KORLOY, MITSUBISHI, ISCAR, TAEGUTEC, PLANSEE TIZIT, KYOCERA etc.,



BCA



PART NO.	BORING RANGE		L	ØB	M	MICROBORE UNIT		
	Min	Max				BRAZED	INDEXABLE	ISO INSERTS
BT45-BCA 13.5-105	13.5	16	105	13	50	M1B2F40	-	-
BT45-BCA 13.5-195			195					
BT45-BCA 14.5-105	14.5	17	105	14	52			
BT45-BCA 14.5-195			195					
BT45-BCA 16-120	16	22.5	120	15	58	M1A2F40	-	-
BT45-BCA 16-195			195					
BT45-BCA 19-135	19	23	135	18	68	M2B2F40	M2B2CO4	CPGT04/CCGT04
BT45-BCA 19-195			195					
BT45-BCA 23-150	23	29	150	22	82	M3B2F40	M3B2T	TCMT 06T104
BT45-BCA 23-210			210					
BT45-BCA 29-165	29	41	165	28	115	M3A2F40	M3A2T	
BT45-BCA 29-225			225					
BT45-BCA 38-165	38	49	165	35	115	M5B2F40	M5B2T	TCMT 110204
BT45-BCA 38-210			210	37	172			
BT45-BCA 46-165	46	66	165	41	115	M5A2F40	M5A2T	TCMT 110204
BT45-BCA 46-225			225	44	182			
BT45-BCA 46-255			255	206				
BT45-BCA 62-165	62	87	165	-	127	M7A2F80	M7A2T	TCMT 110204
BT45-BCA 62-240			240	57	184			
BT45-BCA 62-330			330	59	280			
BT45-BCA 83-165	83	108	165	-	127			
BT45-BCA 83-240			240	70	202			
BT45-BCA 98-165	98	142	165	-	127	M10A2F80	M10A2T	TCMT 16T304
BT45-BCA 98-240			240	-	202			

Note: We can suit ISO insert any make like SANDVIK, SECO, WIDIA, KORLOY, MITSUBISHI, ISCAR, TAEGUTEC, PLANSEE TIZIT, KYOCERA etc.,

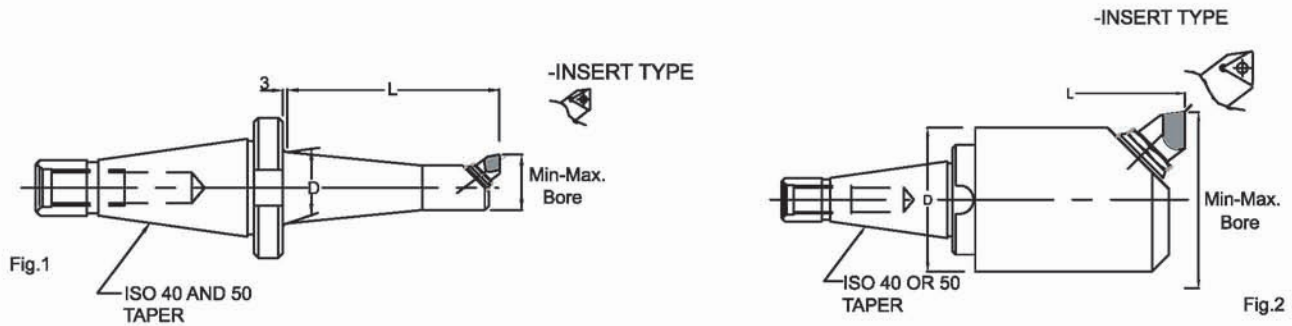


BCA



PART NO.	BORING RANGE		L	ØB	M	MICROBORE UNIT						
	Min	Max				BRAZED	INDEXABLE	ISO INSERTS				
BT50-BCA 13.5-120	13.5	16	120	13	67	M1B2F40	-	-				
BT50-BCA 13.5-195			195									
BT50-BCA 14.5-120	14.5	17	120	14								
BT50-BCA 14.5-195			195									
BT50-BCA 16-120	16	22.5	120	15					73	M1A2F40	-	-
BT50-BCA 16-195			195									
BT50-BCA 19-135	19	23	135	18	86	M2B2F40	M2B2CO4	CPGT04/CCGT04				
BT50-BCA 19-210			210									
BT50-BCA 23-150	23	29	150	22	105	M3B2F40	M3B2T	TCMT 06T104				
BT50-BCA 23-225			225									
BT50-BCA 29-165	29	41	165	28	115	M3A2F40	M3A2T					
BT50-BCA 29-225			225									
BT50-BCA 38-165	38	49	165	35	115	M5B2F40	M5B2T	TCMT 110204				
BT50-BCA 38-225			225									
BT50-BCA 46-165	46	66	165	41	115	M5A2F40	M5A2T	TCMT 110204				
BT50-BCA 46-225			225									
BT50-BCA 46-255			255									
BT50-BCA 62-180	62	87	180	-	137	M7A2F80	M7A2T	TCMT 110204				
BT50-BCA 62-240			240	57					184			
BT50-BCA 62-240			330	59					280			
BT50-BCA 83-165	83	108	165	-	122							
BT50-BCA 83-240			240	70					190			
BT50-BCA 83-345			345	76					302			
BT50-BCA 98-165	98	142	165	-	122	M10A2F80	M10A2T	TCMT 16T304				
BT50-BCA 98-240			240	-					197			
BT50-BCA 98-345			345	92					302			
BT50-BCA 132-315	132	176	210	-	-							
BT50-BCA 132-315			315	-	-							
BT50-BCA 166-225	166	210	225	-	-							
BT50-BCA 166-315			315	-	-							
BT50-BCA 200-210	200	244	210	-	-							

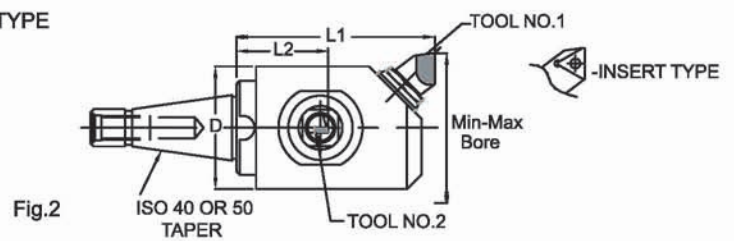
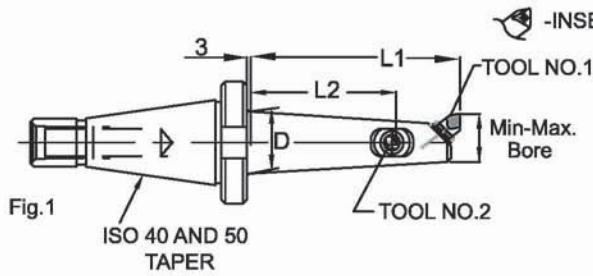
BCA



**SINGLE-TOOL MICRO BORING BARS WITH ISO40 AND ISO50 TAPER SHANK**

PART NO.		D Max.Dia	L-MAX Bore Depth	Boring Range		Microbore Unit			Fig No
ISO40	ISO50			Min	Max	Brazed	Indexable	ISO Insert	
BCA-401	BCA-501	13	67	13.5	15.9	M1B2F40	-	-	1
BCA-402	BCA-502	14	67	14.5	16.9	M1B2F40	-	-	1
BCA-403	BCA-503	15	73	16	22.4	M1A2F40	-	-	1
BCA-404	BCA-504	18	86	19	23	M2B2F40	M2B2CO4	CPGT04/CCGT04	1
BCA-405	BCA-505	22	105	23	29.4	M3B2F40	M3B2T	TCMT06T104	1
BCA-406	BCA-506	28	114	28.6	39.7	M3A2F40	M3A2T	TCMT06T104	1
BCA-407	BCA-507	28	130	28.6	39.7	M3A2F40	M3A2T	TCMT06T104	1
BCA-408	BCA-508	35	114	38.1	49.2	M5B2F40	M5B2T	TCMT0110204	1
BCA-409	BCA-509	37	172	38.1	49.2	M5B2F40	M5B2T	TCMT0110204	1
BCA-410	BCA-510	41	114	46	66.7	M5A2F40	M5A2T	TCMT0110204	1
BCA-411	BCA-511	44	184	46	66.7	M5A2F40	M5A2T	TCMT0110204	1
-	BCA-512	44	206	46	66.7	M5A2F40	M5A2T	TCMT0110204	1
BCA-413	BCA-513	51	127	61.9	87.3	M7A2F80	M7A2T	TCMT0110204	1
BCA-414	BCA-514	57	184	61.9	87.3	M7A2F80	M7A2T	TCMT0110204	1
-	BCA-515	59	280	61.9	87.3	M7A2F80	M7A2T	TCMT0110204	1
BCA-416	-	63	89	82.6	108	M7A2F80	M7A2T	TCMT0110204	2
-	BCA-517	63	86	82.6	108	M7A2F80	M7A2T	TCMT0110204	1
BCA-418	-	63	121	82.6	108	M7A2F80	M7A2T	TCMT0110204	2
-	BCA-519	63	118	82.6	108	M7A2F80	M7A2T	TCMT0110204	1
BCA-420	-	63	200	82.6	108	M7A2F80	M7A2T	TCMT0110204	2
-	BCA-521	70	197	82.6	108	M7A2F80	M7A2T	TCMT0110204	1
-	BCA-522	76	295	82.6	108	M7A2F80	M7A2T	TCMT0110204	1
BCA-423	-	83	121	98.4	142.9	M10A2F80	M10A2T	TCMT016T304	2
-	BCA-524	83	118	98.4	142.9	M10A2F80	M10A2T	TCMT016T304	1
-	BCA-525	92	295	98.4	142.9	M10A2F80	M10A2T	TCMT016T304	1

BCA



**TWO-TOOL MICRO BORING BARS WITH ISO40 AND ISO50 TAPER SHANKS**

Part No		D MaxDia	Max.Bore Depth		TOOL NO.	Boring Range		Microbore Unit			Fig NO.
ISO40	ISO50		L1	L2		Min	Max	Brazed	Indexable	ISO Insert	
BCA2T-401	BCA2T-501	18	86	65	1	19	23	M2B2F40	M2B2CO4	CPGT04/CCGT04	1
					2	25.4	30.2	M2B5F50	-	-	
BCA2T-402	BCA2T-502	22	105	83	1	23	29.4	M3B2F40	M3B2T	TCMT 06T104	1
					2	31	42.1	M2A5F50	M2A5CO4	CPGT04/CCGT04	
BCA2T-403	BCA2T-503	28	114	86	1	28.6	39.7	M3A2F40	M3A2T	TCMT 06T104	1
					2	36.5	52.4	M3A5F50	M3A5T		
BCA2T-404	BCA2T-504	28	130	102	1	28.6	39.7	M3A2F40	M3A2T	TCMT 06T104	1
					2	36.5	52.4	M3A5F50	M3A5T		
BCA2T-405	BCA2T-505	35	114	79	1	38.1	49.2	M5B2F40	M5B2T	TCMT 110204	1
					2	46	61.9	M3A5F50	M3A5T		
BCA2T-406	BCA2T-506	37	172	133	1	38.1	49.2	M5B2F40	M5B2T	TCMT 110204	1
					2	46	61.9	M3A5F50	M3A5T		
BCA2T-407	BCA2T-507	41	114	76	1	46	66.7	M5A2F40	M5A2T	TCMT 110204	1
					2	58.7	85.7	M5A5F50	M5A5T		
BCA2T-408	BCA2T-508	44	184	140	1	46	66.7	M5A2F40	M5A2T	TCMT 110204	1
					2	58.7	85.7	M5A5F50	M5A5T		
-	BCA2T-509	44	206	161	1	46	66.7	M5A2F40	M5A2T	TCMT 110204	1
					2	58.7	85.7	M5A5F50	M5A5T		
BCA2T-410	BCA2T-510	51	127	83	1	61.9	87.3	M7A2F80	M7A2T	TCMT 110204	1
					2	73	100	M5A5F50	M5A5T		
BCA2T-411	BCA2T-511	57	184	133	1	61.9	87.3	M7A2F80	M7A2T	TCMT 110204	1
					2	73	100	M5A5F50	M5A5T		
-	BCA2T-512	59	280	229	1	61.9	87.3	M7A2F80	M7A2T	TCMT 110204	1
					2	92.1	100	M5A5F50	M5A5T		
BCA2T-413	-	63	89	38	1	82.6	108	M7A2F80	M7A2T	TCMT 110204	2
					2	92.1	125.4	M7A5F100	M7A5T		
-	BCA2T-514	63	86	35	1	82.6	108	M7A2F80	M7A2T	TCMT 110204	1
					2	92.1	125.4	M7A5F100	M7A5T		
BCA2T-415	-	63	121	70	1	82.6	108	M7A2F80	M7A2T	TCMT 110204	2
					2	92.1	125.4	M7A5F100	M7A5T		
-	BCA2T-516	63	118	67	1	82.6	108	M7A2F80	M7A2T	TCMT 110204	1
					2	92.1	125.4	M7A5F100	M7A5T		
BCA2T-417	-	63	200	143	1	82.6	108	M7A2F80	M7A2T	TCMT 110204	2
					2	92.1	125.4	M7A5F100	M7A5T		
-	BCA2T-518	70	197	140	1	82.6	108	M7A2F80	M7A2T	TCMT 110204	1
					2	92.1	125.4	M7A5F100	M7A5T		
-	BCA2T-519	76	295	238	1	82.6	108	M7A2F80	M7A2T	TCMT 110204	1
					2	92.1	125.4	M7A5F100	M7A5T		
BCA2T-420	-	83	121	57	1	98.4	142.9	M10A2F80	M10A2T	TCMT 16T304	2
					2	117.5	174.6	M10A5F100	M10A5T		
-	BCA2T-521	83	118	54	1	98.4	142.9	M10A2F80	M10A2T	TCMT 16T304	1
					2	117.5	174.6	M10A5F100	M10A5T		
-	BCA2T-522	92	295	232	1	98.4	142.9	M10A2F80	M10A2T	TCMT 16T304	1
					2	117.5	174.6	M10A5F100	M10A5T		

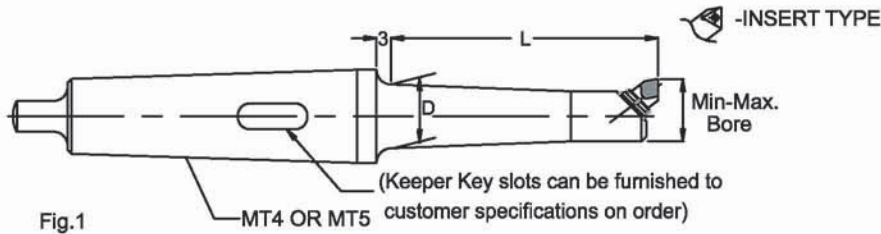


Fig.1

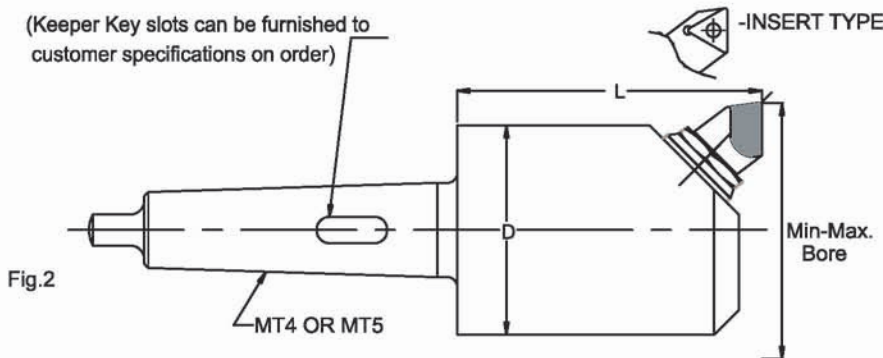


Fig.2

**SINGLE-TOOL MICRO BORING BARS WITH MT4 OR MT5 TAPER SHANKS**

PART NO.		D Max.Dia	L-Max Bore Depth	Boring Range		Microbore unit			Fig No.
MT4	MT5			Min	Max	Brazed	Indexable	ISO insert	
BCA401	BCA501	13	67	13.5	15.9	M1B2F40	-	-	1
BCA402	BCA502	14	67	14.5	16.9	M1B2F40	-	-	1
BCA403	BCA503	15	73	16	22.4	M1A2F40	-	-	1
BCA404	BCA504	18	86	19	23	M2B2F40	M2B2CO4	CPGT04/CCGT04	1
BCA405	BCA505	22	105	23	29.4	M3B2F40	M3B2T	TCMT 06T104	1
BCA406	BCA506	28	114	28.6	39.7	M3A2F40	M3A2T	TCMT 06T104	1
-	BCA507	28	130	28.6	39.7	M3A2F40	M3A2T	TCMT 06T104	1
BCA408	-	35	117	38.1	49.2	M5B2F40	M5B2T	TCMT 110204	2
-	BCA509	35	114	38.1	49.2	M5B2F40	M5B2T	TCMT 110204	1
-	BCA510	37	172	38.1	49.2	M5B2F40	M5B2T	TCMT 110204	1
BCA411	-	41	117	46	66.7	M5A2F40	M5A2T	TCMT 110204	2
-	BCA512	41	114	46	66.7	M5A2F40	M5A2T	TCMT 110204	1
-	BCA513	44	184	46	66.7	M5A2F40	M5A2T	TCMT 110204	1
BCA414	BCA514	51	130	61.9	87.3	M7A2F80	M7A2T	TCMT 110204	2
-	BCA515	57	187	61.9	87.3	M7A2F80	M7A2T	TCMT 110204	2
BCA416	BCA516	63	89	82.6	108	M7A2F80	M7A2T	TCMT 110204	2
BCA417	BCA517	63	121	82.6	108	M7A2F80	M7A2T	TCMT 110204	2
-	BCA518	63	200	82.6	108	M7A2F80	M7A2T	TCMT 110204	2
-	BCA519	83	221	98.4	142.9	M10A2F80	M10A2T	TCMT 16T304	2

Note: 1. Single Tool Boring bars with No.1,2,3 & 6 Morse Taper Shanks are also available on request.

2. "F" in Microbore unit indicates K20 carbide. Ex:-M7A2F\*80

3. Insert type Microbore cartridge also available.

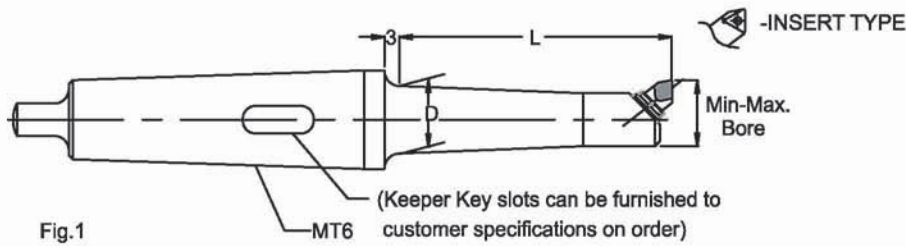


Fig.1

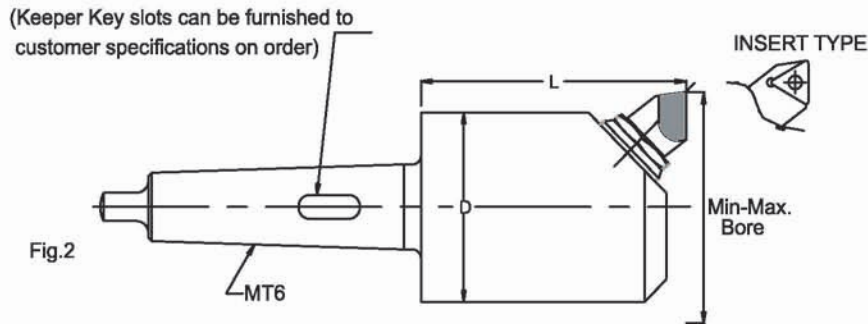
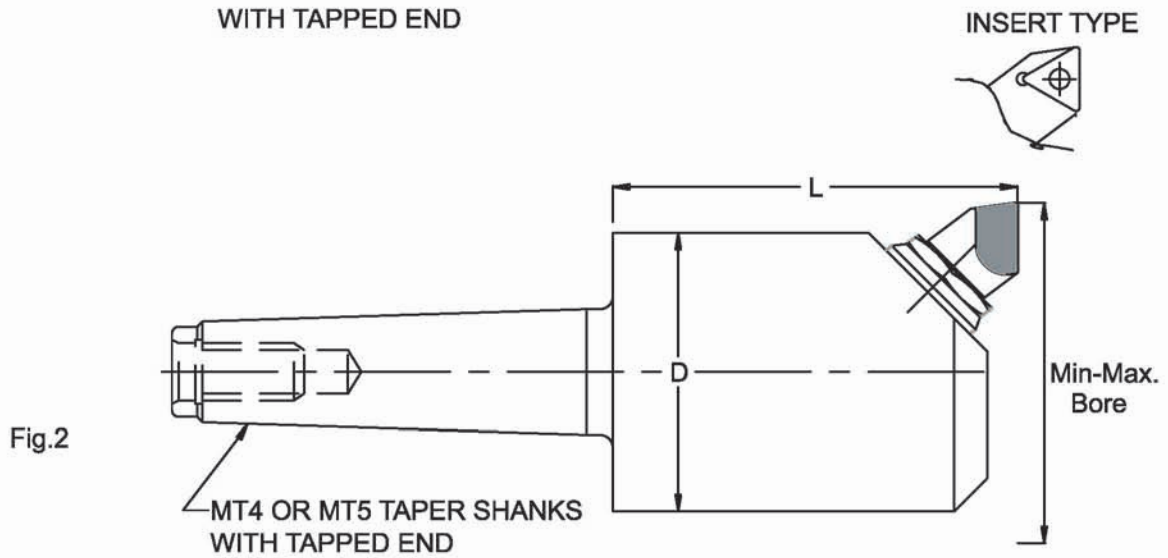
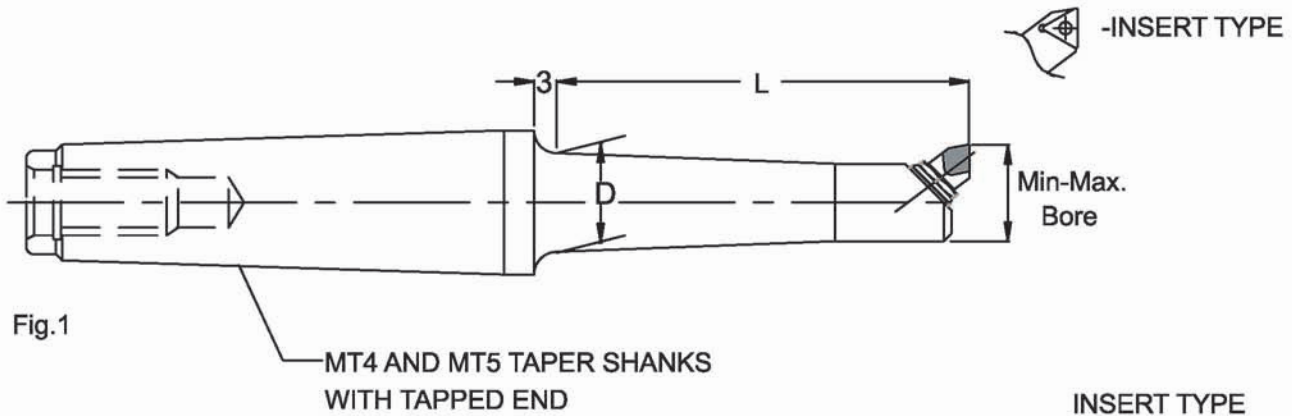


Fig.2

**SINGLE - TOOL MICRO BORING BARS WITH MT6 TAPER SHANK**

PART NO.	D Max.Dia	L-Max Bore Depth	Boring Range		Microbore unit			Fig No.
			Min	Max	Brazed	Indexable	ISO insert	
MT6								
BCA601	13	67	13.5	15.9	M1B2F40	-	-	1
BCA602	14	67	14.5	16.9				
BCA603	15	73	16	22.4	M1A2F40	-	-	1
BCA604	18	86	19	23	M2B2F40	M2B2C04	CPGT04/CCGT04	1
BCA605	22	105	23	29.4	M3B2F40	M3B2T	TCMT 06T104	1
BCA606	28	114	28.6	39.7	M3A2F40	M3A2T	TCMT 06T104	1
BCA607	28	130	28.6	39.7	M3A2F40	M3A2T	TCMT 06T104	1
BCA608	35	114	38.1	49.2	M5B2F40	M5B2T	TCMT 110204	1
BCA609	37	172	38.1	49.2	M5B2F40	M5B2T	TCMT 110204	1
BCA610	41	114	46	66.7	M5A2F40	M5A2T	TCMT 110204	1
BCA611	44	184	46	66.7	M5A2F40	M5A2T	TCMT 110204	1
BCA612	44	206	46	66.7	M5A2F40	M5A2T	TCMT 110204	1
BCA613	51	127	61.9	87.3	M7A2F80	M7A2T	TCMT 110204	1
BCA614	57	184	61.9	87.3	M7A2F80	M7A2T	TCMT 110204	1
BCA615	59	280	61.9	87.3	M7A2F80	M7A2T	TCMT 110204	1
BCA616	63	86	82.6	108	M7A2F80	M7A2T	TCMT 110204	1
BCA617	63	118	82.6	108	M7A2F80	M7A2T	TCMT 110204	1
BCA618	63	197	82.6	108	M7A2F80	M7A2T	TCMT 110204	1
BCA619	76	298	82.6	108	M7A2F80	M7A2T	TCMT 110204	2
BCA620	83	121	98.4	142.9	M10A2F80	M10A2T	TCMT16T304	2
BCA621	92	298	98.4	142.9	M10A2F80	M10A2T	TCMT16T304	2

BCA

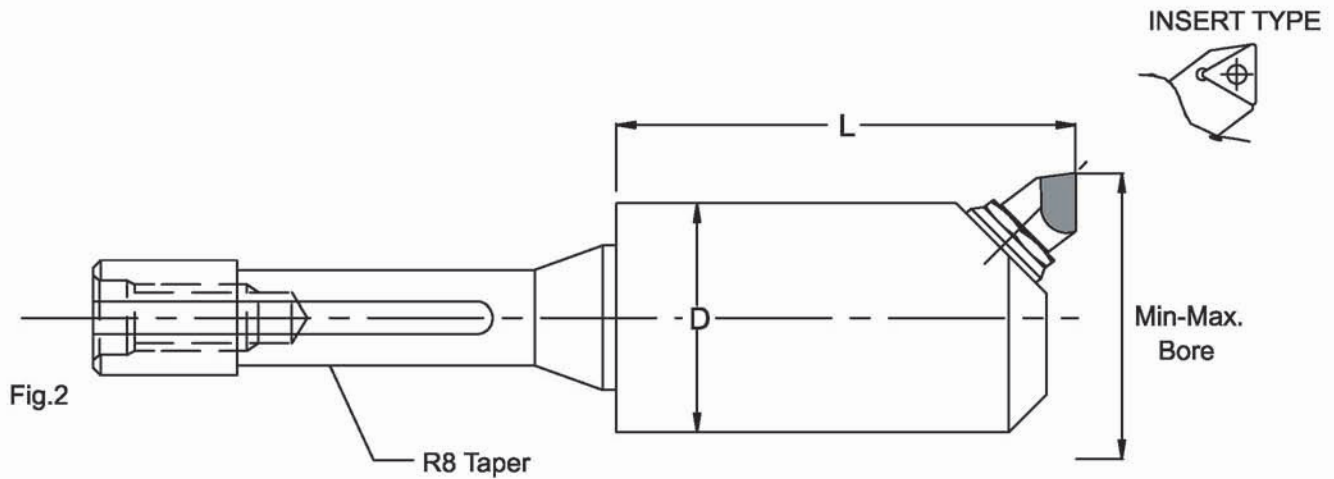
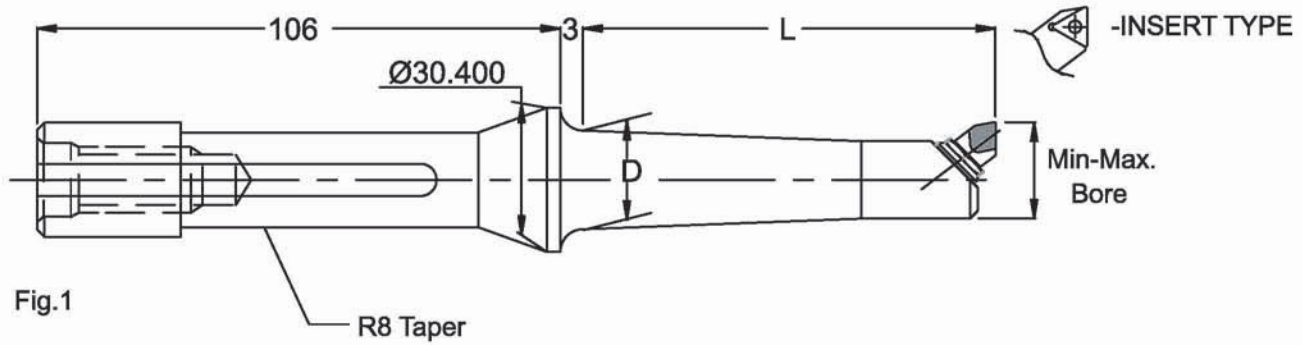


**SINGLE - TOOL MICRO BORINGS BARS WITH MT4 AND MT5 TAPPED END TAPPER SHANKS**

PART NO.		D Max.Dia	L-Max Bore Depth	Boring Range		Microbore unit			Fig No.
MT4	MT5			Min	Max	Brazed	Indexable	ISO insert	
TEBCA-401	TEBCA-501	13	67	13.5	15.9	M1B2F40	-	-	1
TEBCA-402	TEBCA-502	14	67	14.5	16.9				
TEBCA-403	TEBCA-503	15	73	16	22.4	M1A2F40	-	-	1
TEBCA-404	TEBCA-504	18	86	19	23	M2B2F40	M2B2CO4	CPGT04/CCGT04	1
TEBCA-405	TEBCA-505	22	105	23	29.4	M3B2F40	M3B2T	TCMT 06T104	1
TEBCA-406	TEBCA-506	28	114	28.6	39.7				
-	TEBCA-507	28	130	28.6	39.7	M3A2F40	M3A2T	TCMT 06T104	1
TEBCA-408	-	35	117	38.1	49.2	M5B2F40	M5B2T	TCMT 110204	2
-	TEBCA-509	35	114	38.1	49.2				
-	TEBCA-510	37	172	38.1	49.2	M5B2F40	M5B2T	TCMT 110204	1
TEBCA-411	-	41	117	46	66.7	M5A2F40	M5A2T	TCMT 110204	2
-	TEBCA-512	41	114	46	66.7	M5A2F40	M5A2T	TCMT 110204	1
-	TEBCA-513	44	184	46	66.7	M5A2F40	M5A2T	TCMT 110204	1
TEBCA-414	TEBCA-514	51	130	61.9	87.3	M7A2F80	M7A2T	TCMT 110204	2
-	TEBCA-515	57	187	61.9	87.3	M7A2F80	M7A2T	TCMT 110204	2
TEBCA-416	TEBCA-516	63	89	82.6	108	M7A2F80	M7A2T	TCMT 110204	2
TEBCA-417	TEBCA-517	63	121	82.6	108	M7A2F80	M7A2T	TCMT 110204	2
-	TEBCA-518	63	200	82.6	108	M7A2F80	M7A2T	TCMT 110204	2
-	TEBCA-519	83	121	98.4	142.9	M10A2F80	M10A2T	TCMT 16T304	2

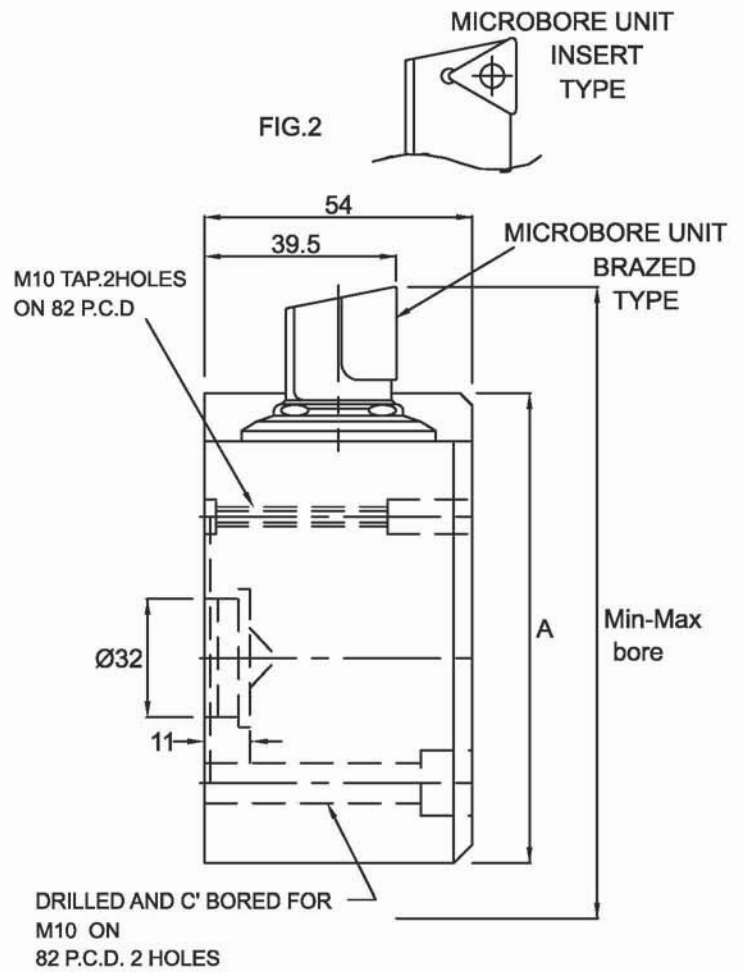
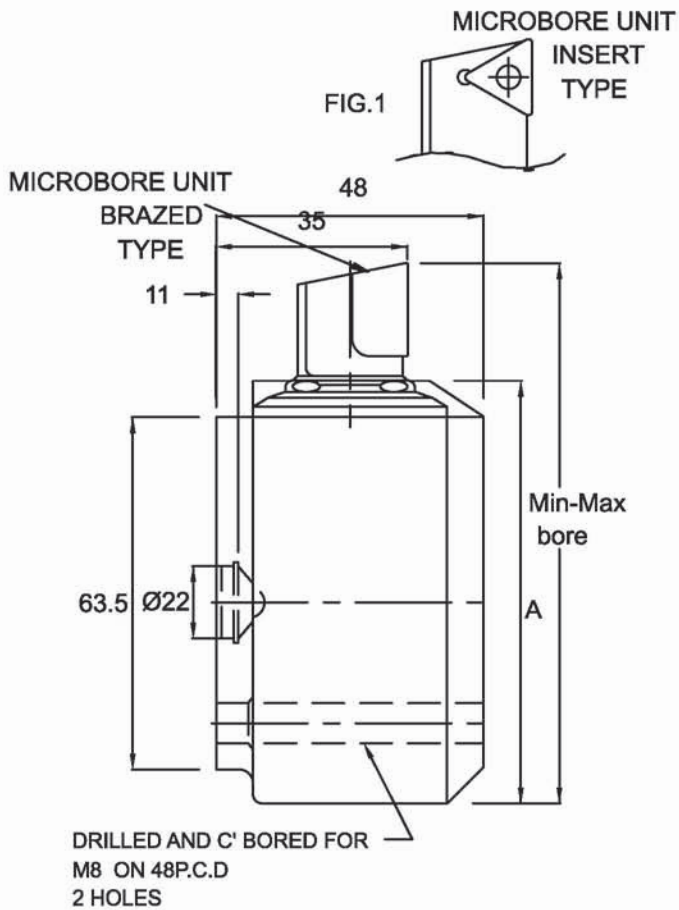


BCA



**SINGLE TOOL MICRO BORING BARS WITH R8 SHANK**

PART NO.	D Max.Dia	L-Max Bore Depth	Boring Range		Microbore unit			Fig No.
			Min	Max	Brazed	Indexable	ISO insert	
R8BCA-801	13	67	13.5	15.9	M1B2F40	-	-	1
R8BCA-802	14	67	14.5	16.9		-	-	
R8BCA-803	15	73	16	22.4	M1A2F40	-	-	1
R8BCA-804	18	86	19	23	M2B2F40	M2B2CO4	CPGT04/CCGT04	1
R8BCA-805	22	105	23	29.4	M3B2F40	M3B2T	TCMT 06T104	1
R8BCA-806	28	114	28.6	39.7	M3A2F40	M3A2T		
R8BCA-807	35	117	38.1	49.2	M5B2F40	M5B2T	TCMT 110204	2
R8BCA-808	41	117	46	66.7	M5A2F40	M5A2T		
R8BCA-809	51	130	61.9	87.3	M7A2F80	M7A2T	TCMT 110204	2
R8BCA-810	63	89	82.6	108	M7A2F80	M7A2T		
R8BCA-811	63	121	82.6	108	M7A2F80	M7A2T		



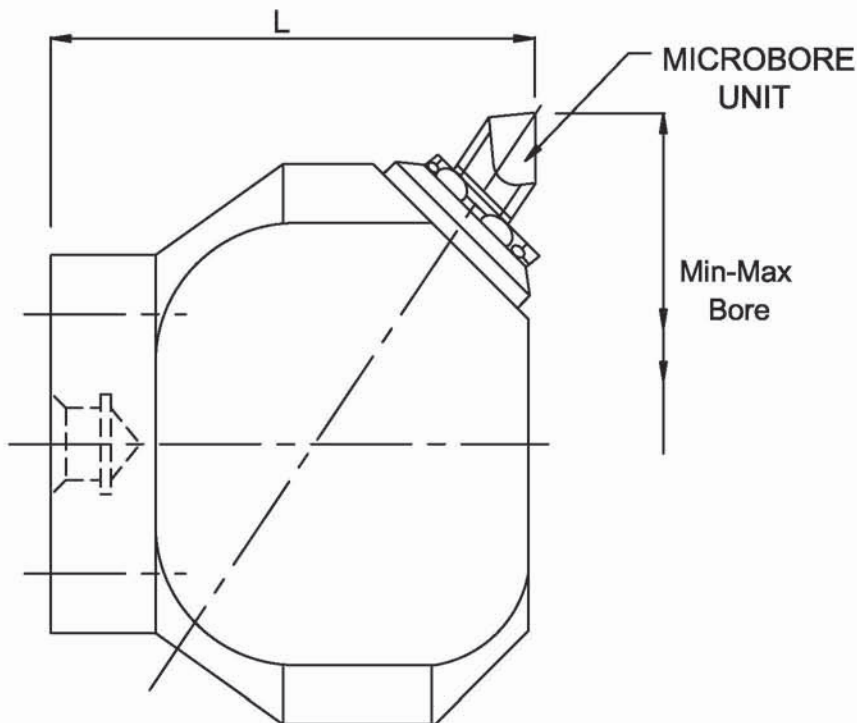
**52 SERIES MICROBORE BORING RINGS (see fig 1)**

PART NO.	A	Boring Range		Microbore unit			Use with adaptor
		Min	Max	Brazed	Indexable	ISO insert	
MTS-52	48	79	112.4	M7A5F100	M7A5T	TCMT 110204	FMA-1300
MTS-54	64	97	130.4	M7A5F100			
MTS-56	76	114	147.4	M7A5F100			
MTS-58	90	132	165.4	M7A5F100			

**32 SERIES MICROBORE BORING RINGS (see fig 2)**

PART NO.	A	Boring Range		Microbore unit			Use with adaptor
		Min	Max	Brazed	Indexable	ISO insert	
MTS-32	102	140	197.2	M10A5F100	M10A5T	TCMT 16 T3 04	FMA-1400
MTS-34	137	191	248.2	M10A5F100			
MTS-36	178	241	298.2	M10A5F100			
MTS-38	229	292	349.2	M10A5F100			
MTS-310	280	343	400.2	M10A5F100			
MTS-312	330	394	451.2	M10A5F100			

Note: We can suit ISO insert any make like SANDVIK, SECO, WIDIA, KORLOY, MITSUBISHI, ISCAR, TAEGUTEC, PLANSEE TIZIT, KYOCERA etc.,



PART NO.	Boring Range		L	Microbore unit			Use with adaptor
	Min	Max		Brazed	Indexable	ISO insert	
MTS-72	79	104	65	M7A2F80	M7A2T	TCMT 110204	FMA-1300
MTS-74	95	120	75	M7A2F80			
MTS-76	114	139	80	M7A2F80			
MTS-78	132	157	85	M7A2F80			
MTS-82	140	184	105	M10A2F80	M10A2T	TCMT 16T304	FMA-1400
MTS-84	178	222	130	M10A2F80			
MTS-86	216	260	109	M10A2F80			
MTS-88	254	298	87	M10A2F80			

Note: \* Boring ring and boring bars are supplied without Tools.

\* Party has to order tool separately indicating carbide grade.

\* Indexable Tools can be used, But bore dia (min. and max.) will differ.

\* We can suit ISO insert any make like

SANDVIK, SECO, WIDIA, KORLOY, MITSUBISHI, ISCAR, TAEGUTEC, PLANSEE TIZIT, KYOCERA etc.,

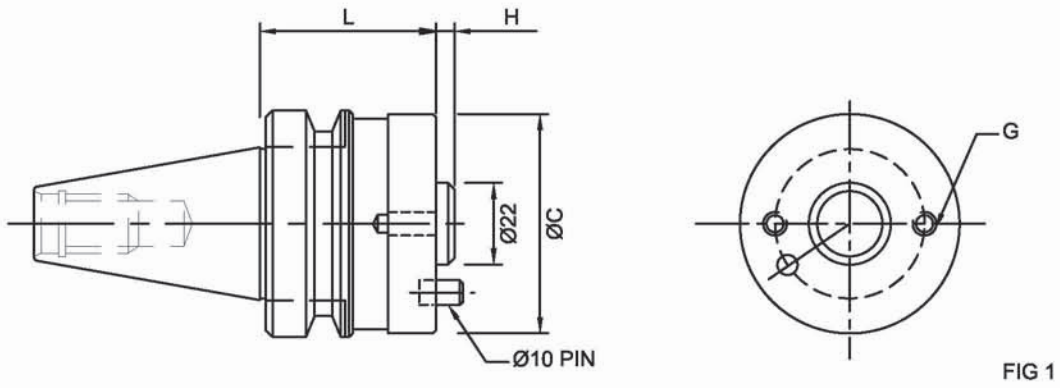


FIG 1

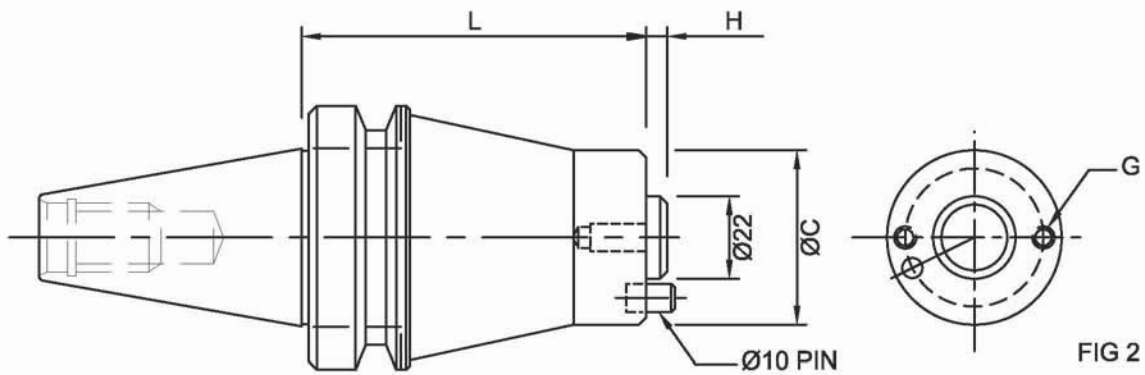


FIG 2

Fig No.	Part No.	L	G	ØC	H	Use with
1	BT40-FMA-1300-90	90	M8	64	10	Series52&72 Boring rings
2	BT40-FMA-1300-150	150				

Fig No.	Part No.	L	G	ØC	H	Use with
1	BT45-FMA-1300-135	135	M8	64	10	Series52&72 Boring rings
2	BT45-FMA-1300-210	210				

Fig No.	Part No.	L	G	ØC	H	Use with
1	BT50-FMA-1300-135	135	M8	64	10	Series52&72 Boring rings
2	BT50-FMA-1300-210	210				

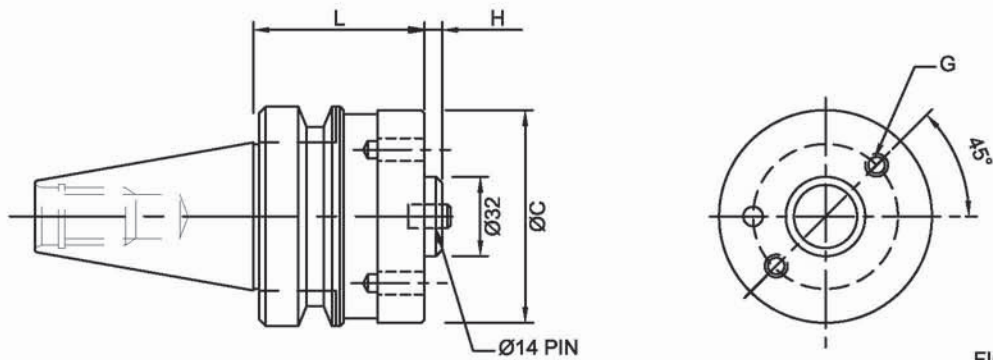


FIG 1

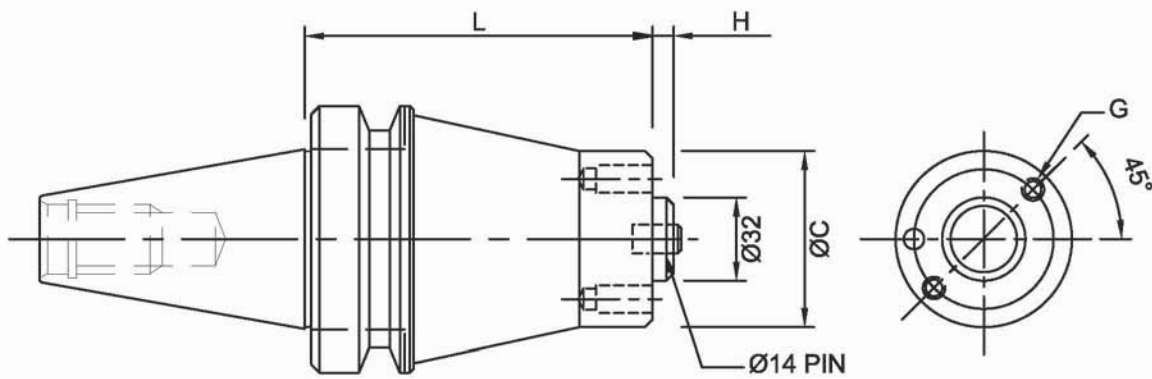


FIG 2

Fig No.	Part No.	L	G	ØC	H	Use with
1	BT40-FMA-1400-60	60	M10	102	10	Series32&82 Boring rings

Fig No.	Part No.	L	G	ØC	H	Use with
1	BT45-FMA-1400-60	60	M10	102	10	Series32&82 Boring rings
2	BT45-FMA-1400-120	120				

Fig No.	Part No.	L	G	ØC	H	Use with
1	BT50-FMA-1400-60	60	M10	102	10	Series32&82 Boring rings
2	BT50-FMA-1400-120	120				

**STRAIGHT SHANK MICROBORE BORING BAR**

BCA

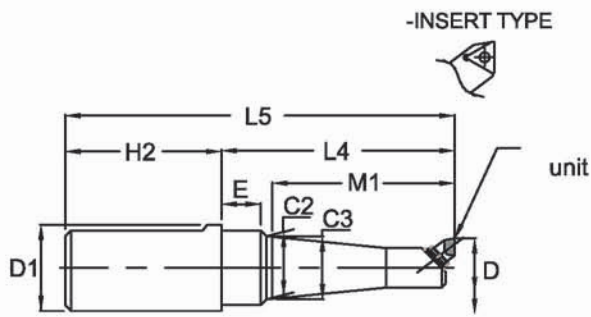


Fig.1

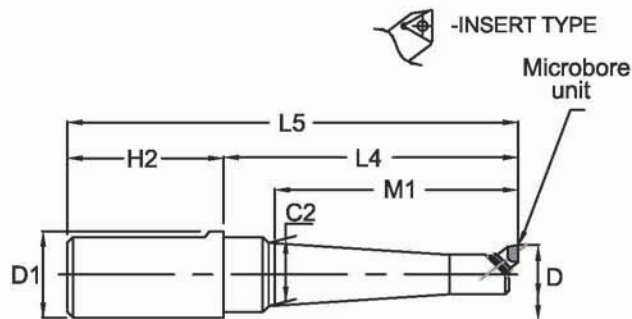


Fig.2

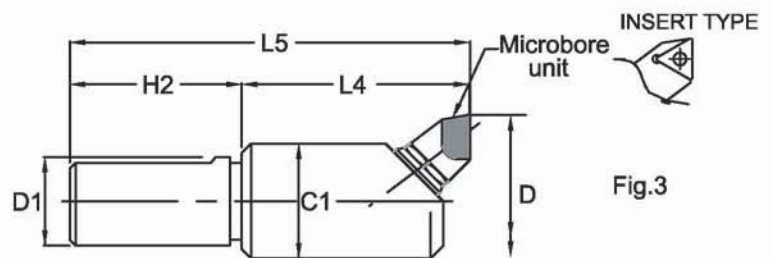


Fig.3

Part No.	Fig No.	D		g6 D1	L4	L5	C1	C2	C3	H2	E	M1	Microbore Unit		
		Min	Max										Brazed	Indexable	ISO insert
ST25-BCA 13.5-75	1	13.5	16	25	75	145	-	13	24	70	5	67	M1B2F40-06	-	-
ST25-BCA 14.5-75		14.5	17		75	145	-	14	24		5	67			
ST25-BCA 16-90		16	22.5		90	160	-	15	24		13	73			
ST25-BCA 19-90	2	19	23		90	160	-	18	-		-	86	M2B2F40-10	M2B2C04	CPGT04/CCGT04
ST25-BCA 23-120	1	23	29		120	190	-	22	24		12	105	M3B2F40-12	M3B2T	TCMT 06T104
ST25-BCA 29-120	3	29	41		120	190	25	-	-		-	-	M3A2F40-16	M3A2T	TCMT 06T104
ST25-BCA 38-120		38	49		120	190	33	-	-		-	-	M5B2F40-20	M5B2T	TCMT 110204
ST25-BCA 46-120		46	66		120	190	38	-	-		-	-	M5A2F40-25	M5A2T	TCMT 110204
ST32-BCA 13.5-75	1	13.5	16		32	75	155	-	13		31	80	5	67	M1B2F40-06
ST32-BCA 14.5-75		14.5	17	75		155	-	14	31	5	67				
ST32-BCA 16-90		16	22.5	90		170	-	15	31	13	73		M1A2F40-08	-	
ST32-BCA 19-90	2	19	23	90		170	-	18	-	-	86		M2B2F40-10	M2B2C04	CPGT04/CCGT04
ST32-BCA 23-120	1	23	29	120		200	-	22	24	12	105		M3B2F40-12	M3B2T	TCMT 06T104
ST32-BCA 29-120	2	29	41	120		200	-	28	-	-	115		M3A2F40-16	M3A2T	TCMT 06T104
ST32-BCA 38-120	3	38	49	120		200	33	-	-	-	-		M5B2F40-20	M5B2T	TCMT 110204
ST32-BCA 46-120		46	66	120		200	38	-	-	-	-		M5A2F40-25	M5A2T	TCMT 110204
ST32-BCA 62-120		62	87	120		200	51	-	-	-	-		M7A2F80-30	M7A2T	TCMT 110204

Note: Insert type Microbore cartridge also available.