

Fig.1

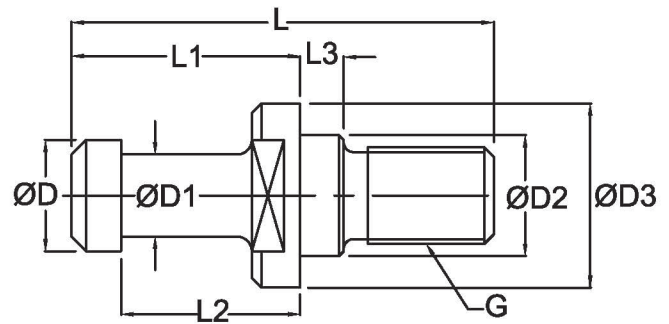


Fig.2

Part No	L	L1	L2	L3	ØD	ØD1	ØD2 h7	ØD3	G	A°	Fig No.
BT30-PS1	43	23	18	4	11.0	7.0	12.5	16.5	M12	45°	1
BT35-PS2	48	28	22.5	4	13.0	8.5	12.5	20.0	M12	45°	1

BT40-PS1	50	25	18	4	15.0	10.0	17.0	23.0	M16	0°	2
BT40-PS2	60	35	28	5	15.0	10.0	17.0	23.0	M16	45°	1
BT40-PS3	60	35	28	5	15.0	10.0	17.0	23.0	M16	30°	1
BT40-PS4	60	35	28	5	15.0	10.0	17.0	23.0	M16	0°	2
BT40-PS5	57	32	26	5	15.0	11.3	17.0	22.0	M16	45°	1
BT40-PS6	60	35	28	5	15.0	10.0	17.0	23.0	M16	0°	2

BT50-PS1	85	45	35	8	23.0	17.0	25.0	38.0	M24	45°	1
BT50-PS3	71	31	23	5	23.0	18.0	25.0	36.0	M24	0°	2
BT50-PS4	85	45	35	8	23.0	17.0	25.0	38.0	M24	30°	1
BT50-PS5	85	45	35	8	23.0	17.0	25.0	38.0	M24	0°	2

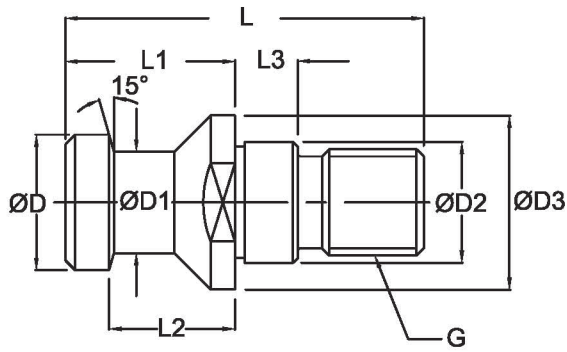


Fig.1

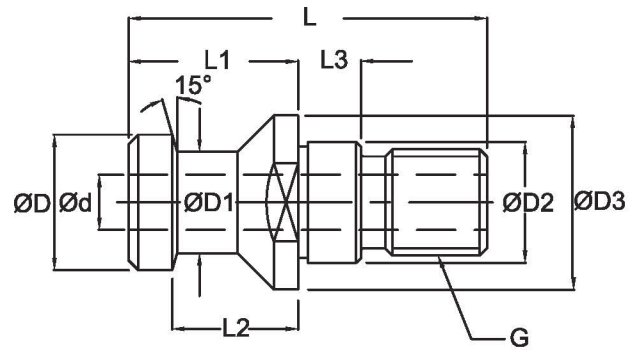


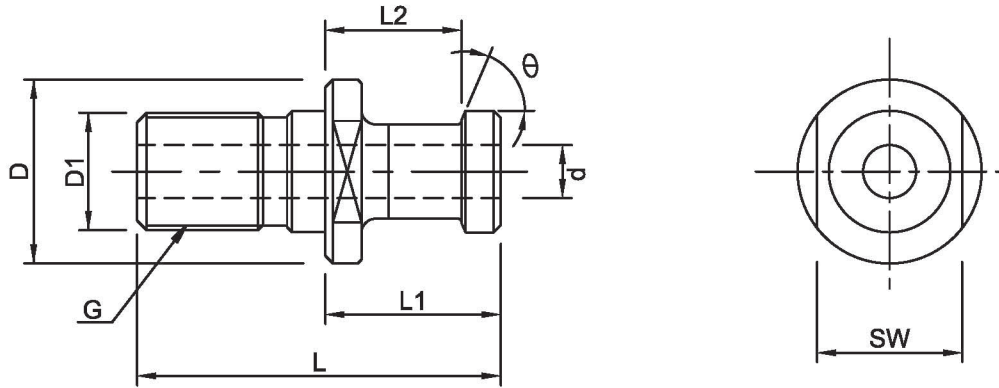
Fig.2
(With Coolant Hole)

Part No	L	L1	L2	L3	ØD	ØD1	Ø D2 ^{h7}	Ø D3	G	Ød	Fig No.
ISO40-PS1	54	26	20	8	19.0	14.0	17.0	23.0	M16	-	1
ISO40-PS2	54	26	20	8	19.0	14.0	17.0	23.0	M16	7	2

ISO45-PS1	65	30	23	9	23.0	17.0	21.0	30.0	M20	-	1
ISO45-PS2	65	30	23	9	23.0	17.0	21.0	30.0	M20	9.5	2

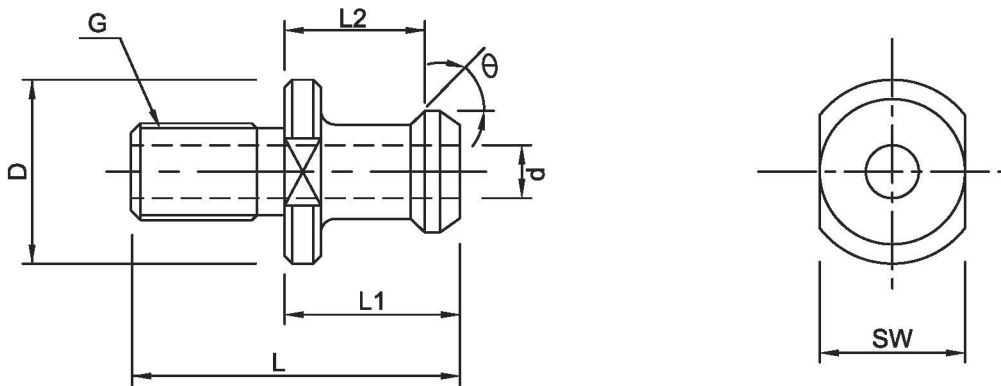
ISO50-PS1	74	34	25	11	28.0	21.0	25.0	36.0	M24	-	1
ISO50-PS2	74	34	25	11	28.0	21.0	25.0	36.0	M24	11.5	2

JIS B6339



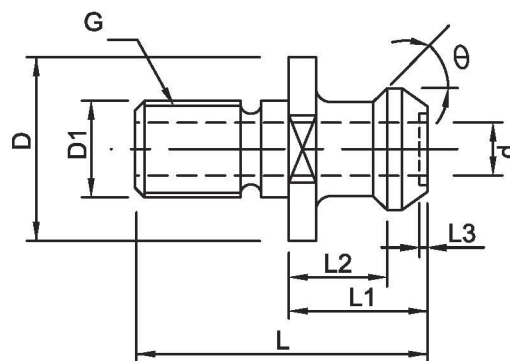
Type	L	L1	L2	D	D1	d	θ	G	SW
JIS B6339-40P	54	29	23	23	17	7	75°	M16	29
JIS B6339-50P	74	34	25	28	25	10	75°	M24	30
JIS B6339-40PA	54	26	20	23	17	7	75°	M16	19
JIS B6339-50PA	74	34	25	36	25	11.5	75°	M24	30
JIS B6339-40PB	44.5	16.4	11.15	22.5	17	7.35	45°	M16	19
JIS B6339-50PB	65.5	25.55	17.95	37	25	11.55	45°	M24	30

ANSI B5.50



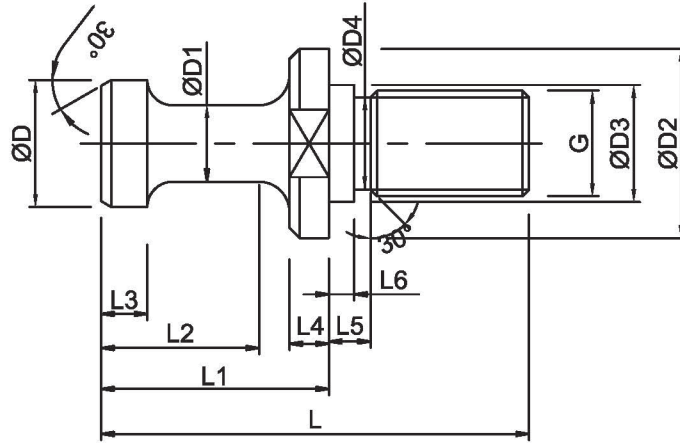
Type	L	L1	L2	D	d	θ	G	SW
ANSI B5.50-40	38.1	16.26	11.18	23.88	7.1	45°	5/8-11UNC	19.05
ANSI B5.50-50	58.4	25.4	17.78	36.5	11.9	45°	1"-8UNC	31.75

MAZAK PULL STUDS



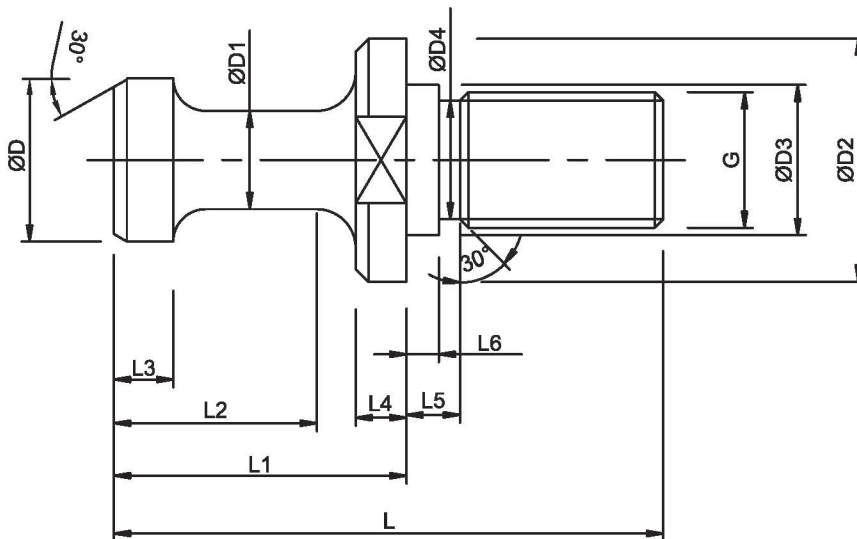
Type	L	L1	L2	D	D1	d	θ	G
MAZAK-BT40	44.1	19.1	14	22	17	7	75°	M16
MAZAK-CAT40	44.1	16.1	11	22	17	7	75°	M16
MAZAK-BT50	65.2	25.2	17.58	37	25	10	75°	M24

ISO 40-AZ9



Part No	L	L1 ± 0.2	L2	L3 + 0.2	L4	L5	L6	φ D - 0.05	φ D1 - 0.1	φ D2	φ D3 ± 0.025	φ D4	G
ISO40-AZ9	58	31.6	22	5	5	6	4	11.95	8.8	24	16.975	13.5	M16

ISO 50-AZ11



Part No	L	L1 ± 0.2	L2	L3 + 0.2	L4	L5	L6	φ D - 0.10	φ D1 - 0.1	φ D2	φ D3 ± 0.025	φ D4	G
ISO50-AZ11	81	41.2	31	7	6	8	6	20.8	16.5	38	24.975	20.5	M24