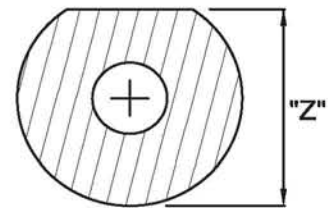
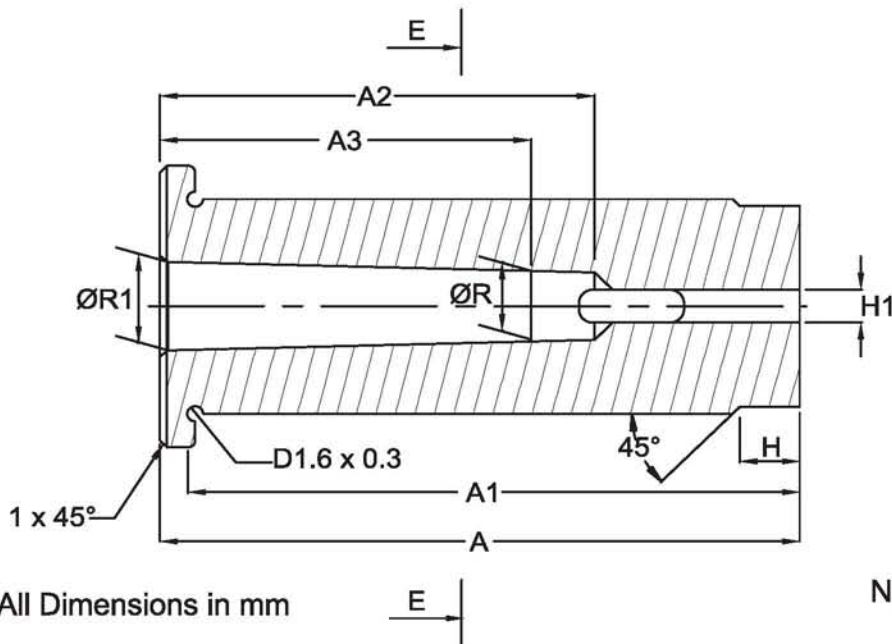
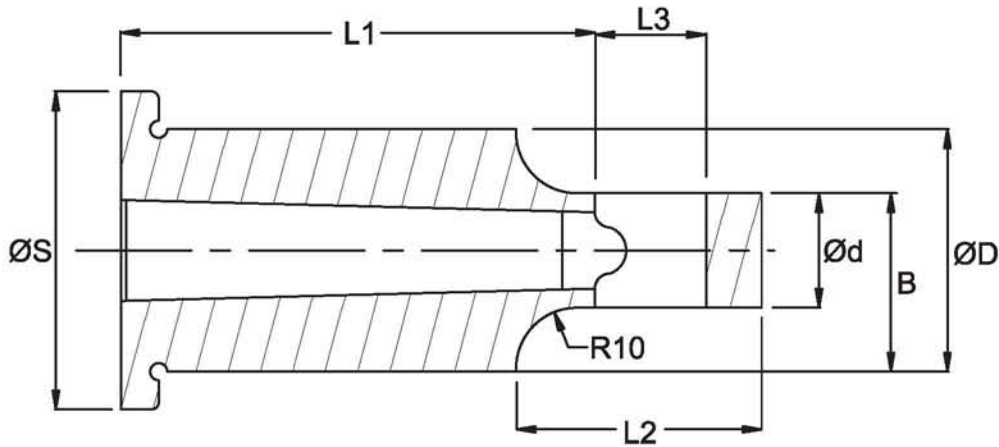


All Dimensions in mm

Designation	D_1^{g6}	D_2	d_1^{H7}	L_1	L_2	L_3	$\varnothing H$
MTS40/8	40	50	8	91	85	6	11
MTS40/10	40	50	10	91	85	6	11
MTS40/12	40	50	12	91	85	6	11
MTS40/16	40	50	16	91	85	6	11
MTS40/20	40	50	20	91	85	6	11
MTS40/25	40	50	25	91	85	6	11
MTS40/32	40	50	32	91	85	6	11
MTS32/8	32	42	8	91	86	5	9
MTS32/10	32	42	10	91	86	5	9
MTS32/12	32	42	12	91	86	5	9
MTS32/16	32	42	16	91	86	5	9
MTS32/20	32	42	20	91	86	5	9
MTS32/25	32	42	25	91	86	5	9

MORSE TAPER SLEEVES - CNC LATHE



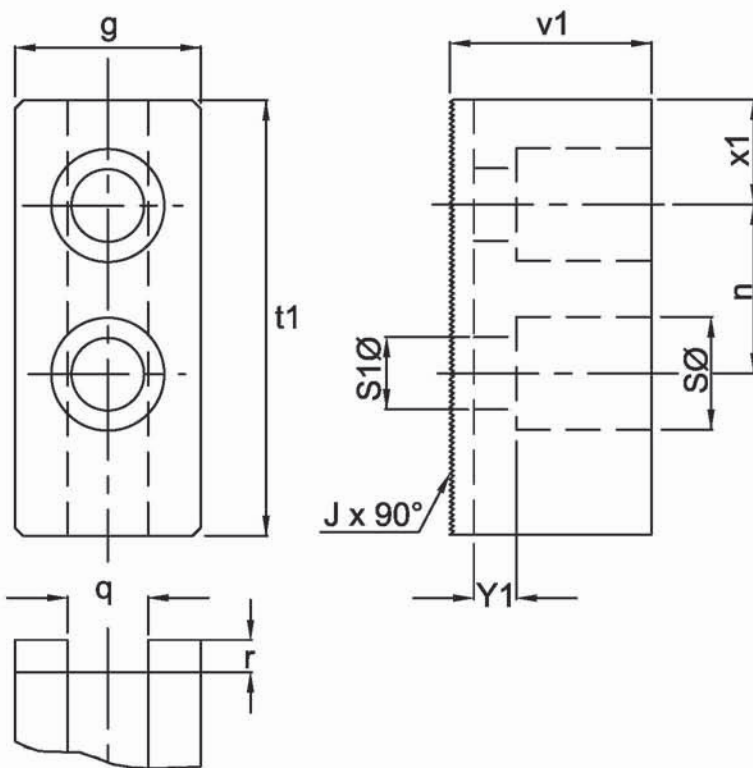
Section 'EE'

All Dimensions in mm

NOTE: "Z"

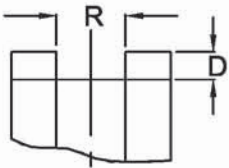
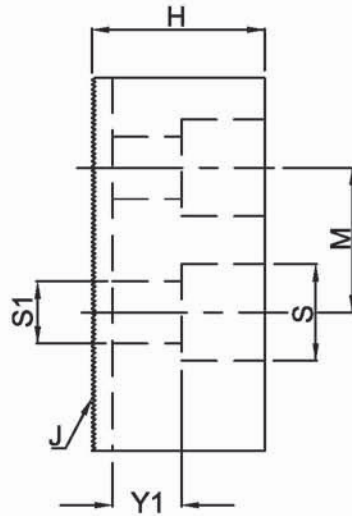
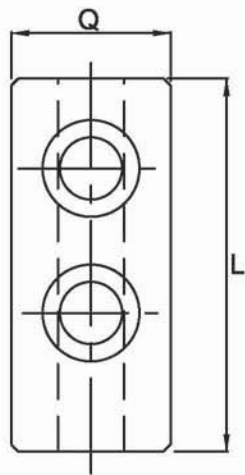
1. For Ø40-clamping 38mm
2. For Ø32-clamping 31mm

SLEEVE	ØS	L1	L2	L3	ØD ^{g6}	Ød	B	ØR ^{H11}	ØR1	A	A1	A2	A3	H	A13 ^{H1}
MTS-40/MT1	50	52	50	19	40	16	28	9.7	12.065	91	85	56	47	12	5.2
MTS-40/MT2	50	62	35	22	40	20	30	14.9	17.78	91	85	67	58	12	6.3
MTS-40/MT3	50	78	-	26	40	-	-	20.2	23.825	105	99	84	72	26	7.9
MTS-32/MT1	42	52	40	19	32	16	24	9.7	12.065	91	86	56	47	10	5.2
MTS-32/MT2	42	62	32	22	32	20	26	14.9	17.78	91	86	67	58	10	6.3
MTS-32/MT3	42	78	-	26	32	-	-	20.2	23.852	91	86	84	72	10	7.9



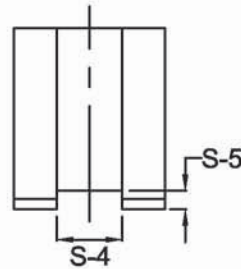
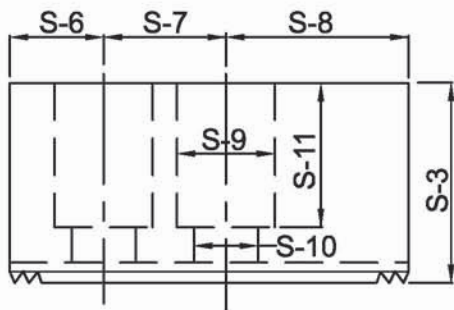
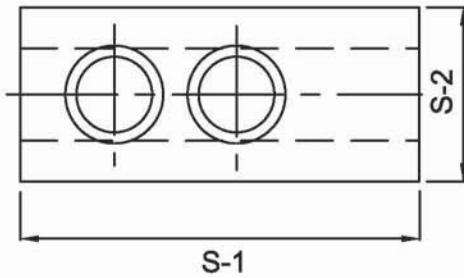
All Dimensions in mm

SIZEØ	g	jx90°	n	^{+0.05} q	r	sØ	s1Ø	t1	v1	x1	y1
165	35	1/16"	19	12	4.5	17.5	11	75	30	20	8
200	35	1/16"	19	17	5	20	14	70	40	15	8
250	45	1/16"	25	21	6	26	18	120	50	35	8
315	50	1/16"	25	21	6	26	18	120	50	35	8
400	60	3/32"	34	25.5	6	34	22	155	60	41	12
500	60	3/32"	34	25.5	6	34	22	155	60	41	12



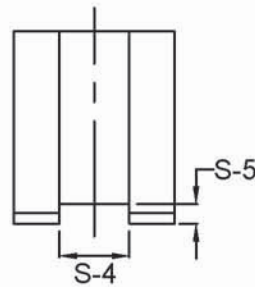
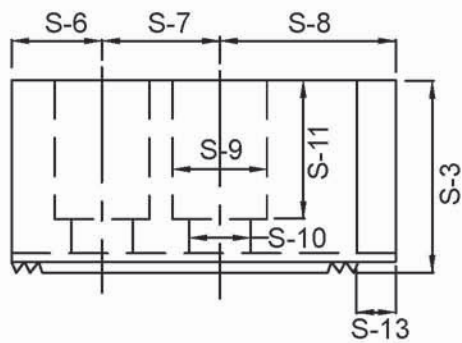
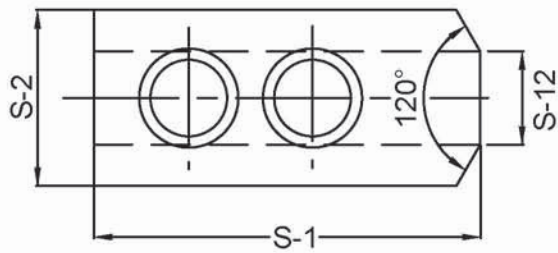
All Dimensions in mm

SIZE	110/125	135	160/165	200	250	305/315	380/400/450	500/530	610
Q	22.5	23	26	35	40	50	62	65	75
Jx90°	1/16"	1/16"	1/16"	1/16"	1/16"	1/16"	1/16"	3/32"	3/32"
M	12	14	20	25	30	30	43	60	60
R ^{H7}	10	10	12	14	16	18	22	25	25
D	3.5	4	5	5	5	5	8	9	9
SØ	11	14	17	19	19	23	32	32	32
S1Ø	6.8	9	11	13	13	15	21	21	21
L	53	54	66	95	110	129	165	180	220
H	30	25	28	38	42	50	65	70	90
Y1	6.5	5	7	10	10	15	16	16	16



All Dimensions in mm

TYPE	SERRATION	S1	S2	S3	S4	S5	S6	S7	S8	S9	S10	S11
SB15C1	60°x1.5	165	62	66	22	8	37	43	85	32	21	42
SB15N1	60°x1.5	135	50	60	25.5	5	26	43	66	32	21	39
SB18A2	60°x3	180	55	70	25	9	40	60	80	32	21	45
SB06A1T	60°x1.5	72	31	32	12	5	15	20	37	17	11	20
SB08A1T	60°x1.5	95	35	38	14	5	24	25	46	19	13	23
SB10A1T	60°x1.5	110	40	42	16	5	30	30	50	19	13	27
SB12A1T	60°x1.5	129	50	50	18	5	39	30	60	23	15	30
SB15C1T	60°x1.5	165	62	66	22	8	37	43	85	32	21	42



All Dimensions in mm

TYPE	SERRATION	S1	S2	S3	S4	S5	S6	S7	S8	S9	S10	S11	S12	S13
SB04B1	60°x1.5	55	23	25	10	4	13	14	28	13.5	8.5	16	3	13
SB04C1	60°x1.5	48	19	23	8	3	8	15	25	11	6.6	15	6	-
SB04N1	60°x1.5	49.5	23	23	10	4	10	14	25.5	13.5	8.5	14	4	-
SB05B1	60°x1.5	62	23	27	10	4	14	19	29	13.5	8.5	18	12	14
SB05C1	60°x1.5	57	23	31	10	3	10	18	29	13.5	8.5	22	12	-
SB05N1	60°x1.5	54	23	25	10	4	12	14	28	13.5	8.5	16	5	-
SB06B1	60°x1.5	72	31	32	12	5	15	20	37	17	11	20	12	15
SB06L1A	60°x1.5	66	26	28	12	5	12	20	34	17	11	16	5	12
SB08B1	60°x1.5	95	35	38	14	5	24	25	46	19	13	23	12	20
SB10B1	60°x1.5	110	40	42	16	5	30	30	50	19	13	27	15	20
SB12B1	60°x1.5	129	50	50	18	5	39	30	60	23	15	30	15	24
SB12N1	60°x1.5	111	50	50	21	4	21	30	60	25	17	33	20	12