

ACROW IMP

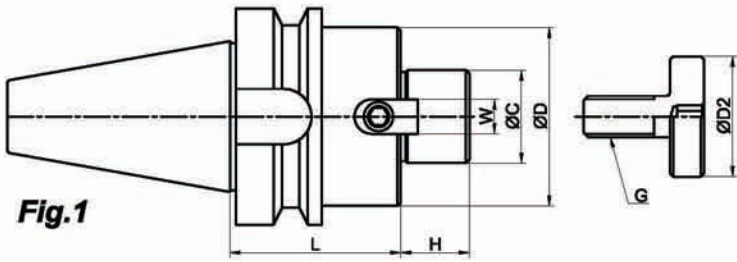


Fig.1

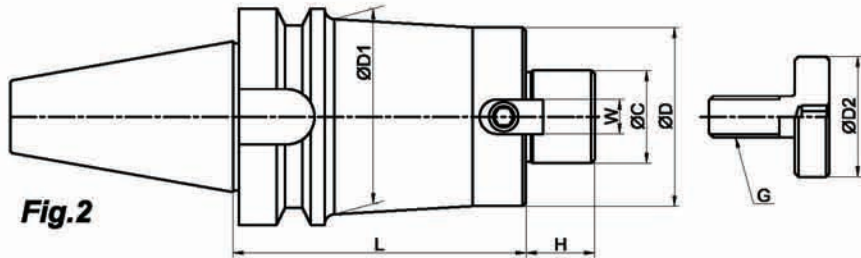


Fig.2

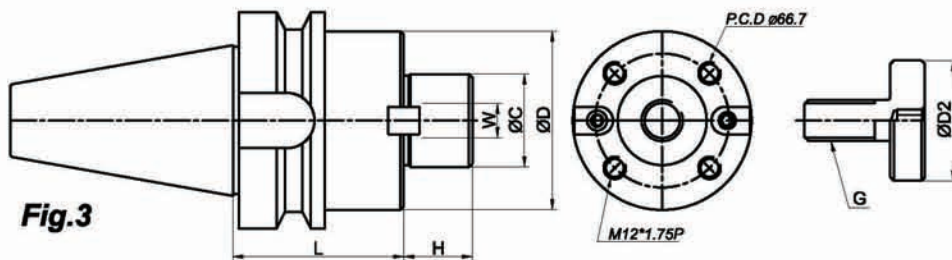


Fig.3

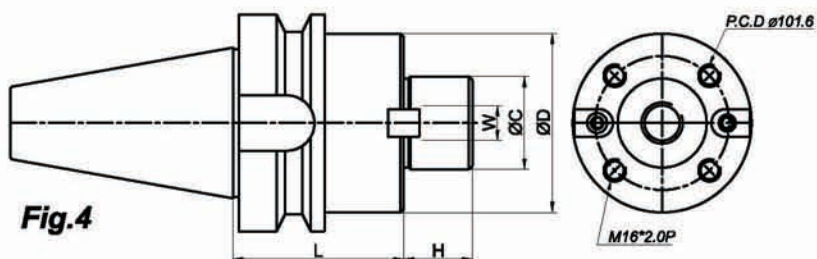


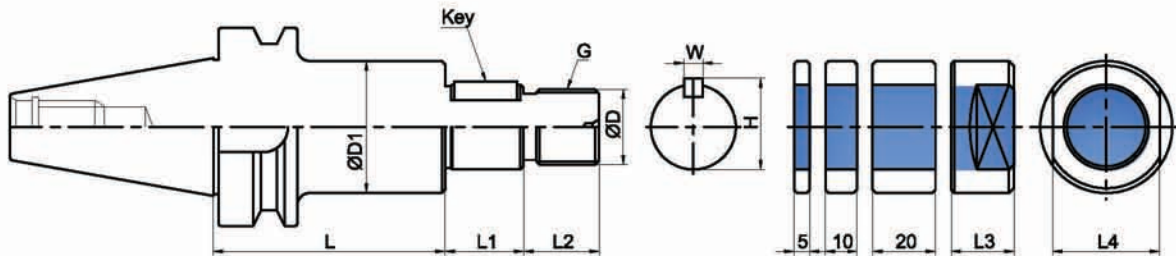
Fig.4



ACROW IMP

Part No.	Fig.	ØC H6	L	H	W	Ø D	Ø D1	Ø D2	G
BT30-SM16-050	1	16	50	17	8	38	-	20	M 8 * 1.25P
-SM22-050		22		18	10	48		28	M10 * 1.50P
-SM27-050		27		20	12	52		35	M12 * 1.75P
BT40-SM16-050	1	16	50	17	8	38	-	20	M 8 * 1.25P
-SM22-055		22	55	18	10	48		28	M10 * 1.50P
-100	2	22	100	18	10	48	58	28	
-150			150						
-SM27-055	1	27	55	20	12	58	-	35	M12 * 1.75P
-100			100						
-130			130						
-SM32-065	1	32	60	23	14	62	-	41	M16 * 2.00P
-100			100						
-SM40-060	3	40	60	27	15.9	89	-	49	M20 * 2.50P
-100			100						

BT50-SM16-045	1	16	45	17	8	38	-	20	M 8 * 1.25P
-SM22-045		22		18	10	48		28	M10 * 1.50P
-100		2		100	18	10			
-150	150		62						
-200	200		68						
-250	2	22	250	20	12	58	68	35	M12 * 1.75P
-300			300						
-SM27-045	1	27	45	20	12	58	-	35	M12 * 1.75P
-100			100						
-150	2	27	150	23	14	78	68	41	M16 * 2.00P
-200			200						
-250			250						
-SM32-045	1	32	45	23	14	78	-	41	M16 * 2.00P
-100			100						
-150	2	150	88						
-SM40-050	3	40	50	27	15.9	89	-	49	M20 * 2.50P
-100			100						
-150			150						
BT50-SM60-090	4	60	90	25	25.4	129.1	-	-	-



Part No.	ØD	ØD1	L	L1	L2	L3	L4	W	H	G
BT30-SCA25.4-050	25.4	40	50	30	25	21	32	6.35	27.78	M24 * 2.0P
-075			75							
BT40-SCA25.4-075	25.4	40	75	30	25	21	32	6.35	27.78	M24 * 2.0P
-120			120							
BT50-SCA25.4-090	25.4	40	90	30	25	21	32	6.35	27.78	M24 * 2.0P
-135			135							

Part No.	ØD	ØD1	L	L1	L2	L3	L4	W	H	G
BT30-SCA22-060	22	34	60	30	21	18	30	6	23.6	M22 * 1.5P
SCA27-060	27	40			25	21	32	7	29.0	M25 * 1.5P
BT40-SCA22-075	22	34	75	30	21	18	30	6	23.6	M22 * 1.5P
-120										
SCA27-075	27	40	75	30	25	21	32	7	29.0	M25 * 1.5P
-120										
SCA32-090	32	46	90	30	26	41	8	34.0	M31 * 2.0P	
BT50-SCA22-090	22	34	90	30	21	18	30	6	23.6	M22 * 1.5P
-135			135							
SCA27-090	27	40	90	30	25	21	32	7	29.0	M25 * 1.5P
-135			135							
SCA32-090	32	46	90	30	26	41	8	34.0	M31 * 2.0P	
-135			135							
SCA40-090	40	55	90	30	36	31	46	10	42.5	M36 * 2.0P
-135			135							

Metric size also available upon request.