

All angle heads have passed precision test and rotation test

TIR: 0.005 mm at holder nose and 0.007 mm at 4xd

Rotation	
<b>Main spindle</b>	<b>Angle shaft</b>
<b>CCW ( M04 ) (Parameter:M04)</b>	<b>CW</b>
Max. min <sup>-1</sup>	
<b>Main spindle(CCW)</b>	<b>Angle shaft(CW)</b>
<b>2500</b>	<b>2400</b>

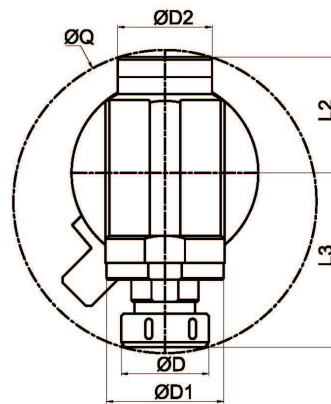
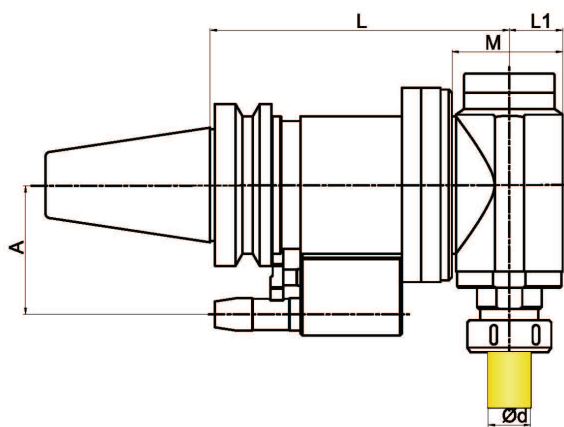


Fig.1

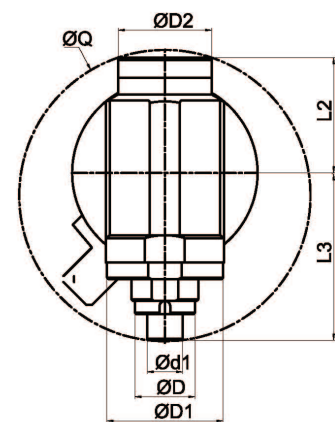


Fig.2

Part No.	Fig.	Ød Range	Ød1	A	L	L1
BT50-TR90-ER40-195	1	Ø3.0 ~ Ø26.0	-	80	195	44
TR90-SM22-195	2	-	22			

Part No.	L2	L3	M	ØD	ØD1	ØD2	ØQ	Kg
BT50-TR90-ER40-195	70	110	97	63	90	70	193	13.6
TR90-SM22-195		108		48			190	